

Product Name: Keap1 Rabbit Monoclonal Antibody**Catalog #: AMRe21357**

For research use only.

Summary

| | |
|----------------------|---|
| Description | Recombinant rabbit monoclonal antibody |
| Host | Rabbit |
| Application | WB,IHC,ICC/IF,ELISA,IP |
| Reactivity | Human,Mouse,Rat |
| Conjugation | Unconjugated |
| Modification | Unmodified |
| Isotype | IgG,Kappa |
| Clonality | Monoclonal |
| Form | Liquid |
| Concentration | 0.3mg/ml. The concentration of this product may be batch-dependent. |
| Storage | Aliquot and store at -20°C (valid for 12 months). Avoid freeze/thaw cycles. |
| Shipping | Ice bags |
| Buffer | PBS, 50% glycerol, 0.05% Proclin 300, 0.05%protective protein |
| Purification | Protein A |

Application

| | |
|-------------------------|---|
| Dilution Ratio | WB 1:2000-1:10000,IHC 1:200-1:1000,ICC/IF 1:200-1:1000,ELISA 1:5000-1:20000,IP 1:50-1:200 |
| Molecular Weight | Calculated MW:70kD;Observed MW:60-70kD |

Antigen Information

| | |
|--------------------------|---|
| Gene Name | KEAP1 |
| Alternative Names | Kelch-like ECH-associated protein 1 (Cytosolic inhibitor of Nrf2) (INrf2) (Kelch-like protein 19) |
| Gene ID | 9817.0 |
| SwissProt ID | Q14145 |
| Immunogen | Recombinant protein of human Keap1 |

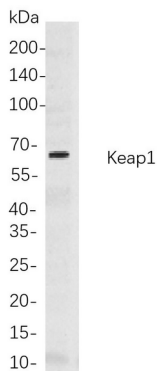
Background

Cell localization:Cytoplasm, Nucleus.kelch like ECH associated protein 1(KEAP1) Homo sapiens This gene encodes a protein

containing KELCH-1 like domains, as well as a BTB/POZ domain. Kelch-like ECH-associated protein 1 interacts with NF-E2-related factor 2 in a redox-sensitive manner and the dissociation of the proteins in the cytoplasm is followed by transportation of NF-E2-related factor 2 to the nucleus. This interaction results in the expression of the catalytic subunit of gamma-glutamylcysteine synthetase. Two alternatively spliced transcript variants encoding the same isoform have been found for this gene. [provided by RefSeq, Jul 2008],

Research Area

Image Data



Western blot analysis of lysates from HEK293 cells, using Keap1 Rabbit mAb. The HRP-conjugated Goat anti-Rabbit IgG antibody was used to detect the antibody.