
Product Name: HMGB1 Rabbit Monoclonal Antibody**Catalog #: AMRe21343**

For research use only.

Summary

Description	Recombinant rabbit monoclonal antibody
Host	Rabbit
Application	WB,IHC,IF,ELISA
Reactivity	Human,Mouse,Rat
Conjugation	Unconjugated
Modification	Unmodified
Isotype	IgG,Kappa
Clonality	Monoclonal
Form	Liquid
Concentration	0.3mg/ml. The concentration of this product may be batch-dependent.
Storage	Aliquot and store at -20°C (valid for 12 months). Avoid freeze/thaw cycles.
Shipping	Ice bags
Buffer	PBS, 50% glycerol, 0.05% Proclin 300, 0.05%protective protein
Purification	Protein A

Application

Dilution Ratio	IHC 1:2000-1:10000;WB 1:5000-1:10000;IF 1:200-1:1000;ELISA 1:5000-1:20000;
Molecular Weight	Calculated MW:25kD;Observed MW:25kD

Antigen Information

Gene Name	HMGB1 HMG1
Alternative Names	High mobility group protein B1 (High mobility group protein 1) (HMG-1)
Gene ID	3146.0
SwissProt ID	P09429
Immunogen	A synthetic peptide of human HMGB1

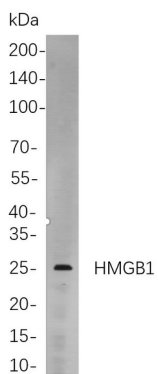
Background

Cell localization:Nucleus.high mobility group box 1(HMGB1) Homo sapiens This gene encodes a protein that belongs to the High Mobility Group-box superfamily. The encoded non-histone, nuclear DNA-binding protein regulates transcription, and is involved in organization of DNA. This protein plays a role in several cellular processes, including inflammation, cell

differentiation and tumor cell migration. Multiple pseudogenes of this gene have been identified. Alternative splicing results in multiple transcript variants that encode the same protein. [provided by RefSeq, Sep 2015],

Research Area

Image Data



Western blot analysis of lysates from HeLa cells, using HMGB1 Rabbit mAb. The HRP-conjugated Goat anti-Rabbit IgG antibody was used to detect the antibody.