
Product Name: ALPP Rabbit Monoclonal Antibody**Catalog #: AMRe21342**

For research use only.

Summary

Description	Recombinant rabbit monoclonal antibody
Host	Rabbit
Application	WB,IHC,IF,ELISA
Reactivity	Human,Mouse,Rat
Conjugation	Unconjugated
Modification	Unmodified
Isotype	IgG,Kappa
Clonality	Monoclonal
Form	Liquid
Concentration	0.3mg/ml. The concentration of this product may be batch-dependent.
Storage	Aliquot and store at -20°C (valid for 12 months). Avoid freeze/thaw cycles.
Shipping	Ice bags
Buffer	PBS, 50% glycerol, 0.05% Proclin 300, 0.05%protective protein
Purification	Protein A

Application

Dilution Ratio	IHC 1:200-1:1000;WB 1:2000-1:10000;IF 1:200-1:1000;ELISA 1:5000-1:20000;
Molecular Weight	Calculated MW:58kD;Observed MW:70kD

Antigen Information

Gene Name	ALPP
Alternative Names	ALPP;PLAP;Alkaline phosphatase; placental type;Alkaline phosphatase Regan isozyme;Placental alkaline phosphatase 1;PLAP-1
Gene ID	250
SwissProt ID	P05187
Immunogen	A synthetic peptide corresponding to target protein

Background

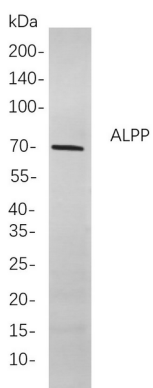
Cell localization:Membrane.The protein encoded by this gene is an alkaline phosphatase, a metalloenzyme that catalyzes the hydrolysis of phosphoric acid monoesters. It belongs to a multigene family composed of four alkaline phosphatase

isoenzymes. The enzyme functions as a homodimer and has a catalytic site containing one magnesium and two zinc ions, which are required for its enzymatic function. The protein is primarily expressed in placental and endometrial tissue; however, strong ectopic expression has been detected in ovarian adenocarcinoma, serous cystadenocarcinoma, and other ovarian cancer cells. [provided by RefSeq, Jan 2015],

Research Area

Cell Biology; Tags & Cell Markers; Cancer

Image Data



Western blot analysis of lysates from HeLa cells, using ALPP Rabbit mAb. The HRP-conjugated Goat anti-Rabbit IgG antibody was used to detect the antibody.