
Product Name: ERK1/2 Rabbit Monoclonal Antibody**Catalog #: AMRe21337**

For research use only.

Summary

Description	Recombinant rabbit monoclonal antibody
Host	Rabbit
Application	WB,IHC,IF,IP,ELISA
Reactivity	Human,Mouse,Rat,Geese
Conjugation	Unconjugated
Modification	Unmodified
Isotype	IgG,Kappa
Clonality	Monoclonal
Form	Liquid
Concentration	0.3mg/ml. The concentration of this product may be batch-dependent.
Storage	Aliquot and store at -20°C (valid for 12 months). Avoid freeze/thaw cycles.
Shipping	Ice bags
Buffer	PBS, 50% glycerol, 0.05% Proclin 300, 0.05%protective protein
Purification	Protein A

Application

Dilution Ratio	IHC 1:2000-1:10000;WB 1:2000-1:10000;IF 1:200-1:1000;ELISA 1:5000-1:20000;IP 1:50-1:200;
Molecular Weight	Calculated MW:43kD,41kD;Observed MW:43kD,41kD

Antigen Information

Gene Name	MAPK1/MAPK3 MAPK3;ERK1;PRKM3;Mitogen-activated protein kinase 3;MAP kinase 3;MAPK
Alternative Names	3;ERT2;Extracellular signal-regulated kinase 1;ERK-1;Insulin-stimulated MAP2 kinase;MAP kinase isoform p44;p44-MAPK;Microtubule-associated protein 2 kinase;p
Gene ID	5595;5594
SwissProt ID	P28482,P27361
Immunogen	

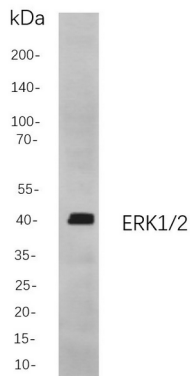
Background

Cell localization:Cytoplasm, Nucleus.The protein encoded by this gene is a member of the MAP kinase family. MAP kinases, also

known as extracellular signal-regulated kinases (ERKs), act in a signaling cascade that regulates various cellular processes such as proliferation, differentiation, and cell cycle progression in response to a variety of extracellular signals. This kinase is activated by upstream kinases, resulting in its translocation to the nucleus where it phosphorylates nuclear targets. Alternatively spliced transcript variants encoding different protein isoforms have been described. [provided by RefSeq, Jul 2008],

Research Area

Image Data



Western blot analysis of lysates from 3T3-L1 cells, using ERK1/2 Rabbit mAb. The HRP-conjugated Goat anti-Rabbit IgG antibody was used to detect the antibody.