

Product Name: CD43 Rabbit Monoclonal Antibody
Catalog #: AMRe21328



Summary

Production Name	CD43 Rabbit Monoclonal Antibody
Description	Rabbit Monoclonal Antibody
Host	Rabbit
Application	WB,IHC,IF,IP,ELISA
Reactivity	Human

Performance

Conjugation	Unconjugated
Modification	Unmodified
Isotype	IgG,Kappa
Clonality	Monoclonal
Form	Liquid
Storage	Store at 4°C short term. Aliquot and store at -20°C long term. Avoid freeze/thaw cycles.
Buffer	PBS, 50% glycerol, 0.05% Proclin 300, 0.05% protective protein
Purification	Protein A

Immunogen

Gene Name	SPN CD43
Alternative Names	Leukosialin (Galactoglycoprotein;GALGP;Leukocyte sialoglycoprotein;Sialophorin;CD antigen CD43)
Gene ID	6693.0
SwissProt ID	P16150.

Application

Dilution Ratio	IHC 1:200-1:1000;WB 1:2000-1:10000;IF 1:200-1:1000;ELISA 1:5000-1:20000;IP 1:50-1:200;
Molecular Weight	Calculated MW:40kD;Observed MW:130kD

Background

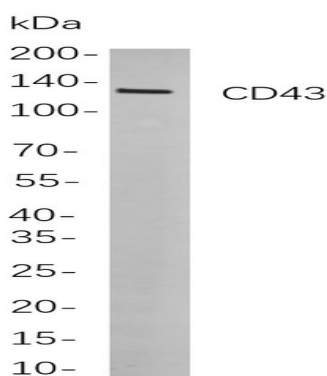
Product Name: CD43 Rabbit Monoclonal Antibody
Catalog #: AMRe21328



Cell localization:Membrane.The protein encoded by this gene is a major sialoglycoprotein found on the surface of thymocytes, T lymphocytes, monocytes, granulocytes, and some B lymphocytes. It may be part of a physiologic ligand-receptor complex involved in T-cell activation. During T-cell activation, this protein is actively removed from the T-cell-APC (antigen-presenting cell) contact site, suggesting a negative regulatory role in adaptive immune response. [provided by RefSeq, Sep 2011],

Research Area

Image Data



Western blot analysis of lysates from HL-60

cells, using CD43 Rabbit mAb. The HRP-conjugated Goat anti-Rabbit IgG antibody was used to detect the antibody.

Note

For research use only.