

## Summary

<b>Production Name</b>	EGFR Rabbit Monoclonal Antibody
<b>Description</b>	Rabbit Monoclonal Antibody
<b>Host</b>	Rabbit
<b>Application</b>	WB,IHC,IF,IP,ELISA
<b>Reactivity</b>	Human,Mouse,Rat

## Performance

<b>Conjugation</b>	Unconjugated
<b>Modification</b>	Unmodified
<b>Isotype</b>	IgG,Kappa
<b>Clonality</b>	Monoclonal
<b>Form</b>	Liquid
<b>Storage</b>	Store at 4°C short term. Aliquot and store at -20°C long term. Avoid freeze/thaw cycles.
<b>Buffer</b>	PBS, 50% glycerol, 0.05% Proclin 300, 0.05% protective protein
<b>Purification</b>	Protein A

## Immunogen

<b>Gene Name</b>	EGFR
<b>Alternative Names</b>	EGFR;ERBB;ERBB1;HER1;Epidermal growth factor receptor;Proto-oncogene c-ErbB-1;Receptor tyrosine-protein kinase erbB-1
<b>Gene ID</b>	1956
<b>SwissProt ID</b>	P00533.

## Application

<b>Dilution Ratio</b>	IHC 1:200-1:1000;WB 1:2000-1:10000;IF 1:200-1:1000;ELISA 1:5000-1:20000;IP 1:50-1:200;
<b>Molecular Weight</b>	Calculated MW:134kD;Observed MW:175kD

## Background

**Product Name: EGFR Rabbit Monoclonal Antibody**  
**Catalog #: AMRe21323**

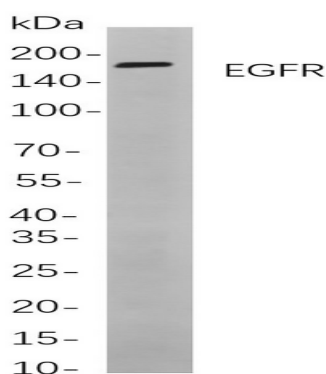
---



Cell localization:Membrane.The protein encoded by this gene is a transmembrane glycoprotein that is a member of the protein kinase superfamily. This protein is a receptor for members of the epidermal growth factor family. EGFR is a cell surface protein that binds to epidermal growth factor. Binding of the protein to a ligand induces receptor dimerization and tyrosine autophosphorylation and leads to cell proliferation. Mutations in this gene are associated with lung cancer. [provided by RefSeq, Jun 2016],

## Research Area

## Image Data



Western blot analysis of lysates from HeLa

cells, using EGFR Rabbit mAb. The HRP-conjugated Goat anti-Rabbit IgG antibody was used to detect the antibody.

## Note

For research use only.