

**Product Name: MEK3 Rabbit Monoclonal Antibody****Catalog #: AMRe21303**

For research use only.

**Summary**

<b>Description</b>	Recombinant rabbit monoclonal antibody
<b>Host</b>	Rabbit
<b>Application</b>	WB,IHC,ICC/IF,ELISA,IP
<b>Reactivity</b>	Human,Mouse,Rat
<b>Conjugation</b>	Unconjugated
<b>Modification</b>	Unmodified
<b>Isotype</b>	IgG,Kappa
<b>Clonality</b>	Monoclonal
<b>Form</b>	Liquid
<b>Concentration</b>	0.3mg/ml. The concentration of this product may be batch-dependent.
<b>Storage</b>	Aliquot and store at -20°C (valid for 12 months). Avoid freeze/thaw cycles.
<b>Shipping</b>	Ice bags
<b>Buffer</b>	PBS, 50% glycerol, 0.05% Proclin 300, 0.05%protective protein
<b>Purification</b>	Protein A

**Application**

<b>Dilution Ratio</b>	WB 1:2000-1:10000,IHC 1:200-1:1000,ICC/IF 1:200-1:1000,ELISA 1:5000-1:20000,IP 1:50-1:200
<b>Molecular Weight</b>	Calculated MW:39kD;Observed MW:39kD

**Antigen Information**

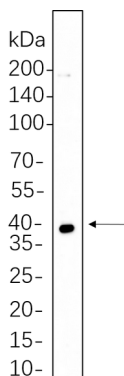
<b>Gene Name</b>	MAP2K3 MAP2K3;MEK3;MKK3;PRKMK3;SKK2;Dual specificity mitogen-activated protein kinase
<b>Alternative Names</b>	kinase 3;MAP kinase kinase 3;MAPKK 3;MAPK/ERK kinase 3;MEK 3;Stress-activated protein kinase kinase 2;SAPK kinase 2;SAPKK-2;SAPKK2
<b>Gene ID</b>	5606
<b>SwissProt ID</b>	P46734
<b>Immunogen</b>	Recombinant protein of human MEK3

**Background**

Cell localization: Cytoplasm, Nucleus. The protein encoded by this gene is a dual specificity protein kinase that belongs to the MAP kinase kinase family. This kinase is activated by mitogenic and environmental stress, and participates in the MAP kinase-mediated signaling cascade. It phosphorylates and thus activates MAPK14/p38-MAPK. This kinase can be activated by insulin, and is necessary for the expression of glucose transporter. Expression of RAS oncogene is found to result in the accumulation of the active form of this kinase, which thus leads to the constitutive activation of MAPK14, and confers oncogenic transformation of primary cells. The inhibition of this kinase is involved in the pathogenesis of Yersinia pseudotuberculosis. Multiple alternatively spliced transcript variants that encode distinct isoforms have been reported for this gene. [provided by RefSeq, Jul 2008],

## Research Area

## Image Data



Jurkat cell lysates were separated by 4-20% SDS-PAGE, and the membrane was blotted with MEK3 Rabbit Monoclonal Antibody 1:1000. The HRP-conjugated Goat anti-Rabbit IgG(H + L) antibody was used to detect the antibody.