

Product Name: HRAS Rabbit Monoclonal Antibody**Catalog #: AMRe21292**

For research use only.

Summary

Description	Recombinant rabbit monoclonal antibody
Host	Rabbit
Application	WB,IHC,ICC/IF,ELISA,IP
Reactivity	Human,Mouse,Rat
Conjugation	Unconjugated
Modification	Unmodified
Isotype	IgG,Kappa
Clonality	Monoclonal
Form	Liquid
Concentration	0.3mg/ml. The concentration of this product may be batch-dependent.
Storage	Aliquot and store at -20°C (valid for 12 months). Avoid freeze/thaw cycles.
Shipping	Ice bags
Buffer	PBS, 50% glycerol, 0.05% Proclin 300, 0.05%protective protein
Purification	Protein A

Application

Dilution Ratio	WB 1:2000-1:10000,IHC 1:200-1:1000,ICC/IF 1:200-1:1000,ELISA 1:5000-1:20000,IP 1:50-1:200
Molecular Weight	Calculated MW:21kD;Observed MW:21kD

Antigen Information

Gene Name	HRAS
Alternative Names	HRAS,HRAS1,GTPase,H-Ras-1,Ha-Ras,Transforming protein p21, ,c-H-ras, p21ras, Cleaved into: GTPase HRas N-terminally processed,Cleaved into: GTPase Hras,GTPase Hras,HRAS 1,
Gene ID	3265.0
SwissProt ID	P01112
Immunogen	A synthetic peptide of human GTPase HRAS

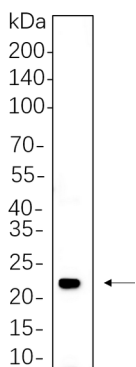
Background

Cell localization:Cytoplasm, Membrane.This gene belongs to the Ras oncogene family, whose members are related to the

transforming genes of mammalian sarcoma retroviruses. The products encoded by these genes function in signal transduction pathways. These proteins can bind GTP and GDP, and they have intrinsic GTPase activity. This protein undergoes a continuous cycle of de- and re-palmitoylation, which regulates its rapid exchange between the plasma membrane and the Golgi apparatus. Mutations in this gene cause Costello syndrome, a disease characterized by increased growth at the prenatal stage, growth deficiency at the postnatal stage, predisposition to tumor formation, cognitive disability, skin and musculoskeletal abnormalities, distinctive facial appearance and cardiovascular abnormalities. Defects in this gene are implicated in a variety of cancers, including bladder cancer, follicular thyroid cancer, and oral squamous cell carcinoma. Multiple transcript variants, which encode different isoforms, have been identified for this gene. [provided by RefSeq, Jul 2008]

Research Area

Image Data



PC-12 cell lysates were separated by 4-20% SDS-PAGE, and the membrane was blotted with HRAS Rabbit Monoclonal Antibody 1:1000. The HRP-conjugated Goat anti-Rabbit IgG(H + L) antibody was used to detect the antibody.