

Product Name: LKB1 Rabbit Monoclonal Antibody
Catalog #: AMRe21287



Summary

| | |
|------------------------|---------------------------------|
| Production Name | LKB1 Rabbit Monoclonal Antibody |
| Description | Rabbit Monoclonal Antibody |
| Host | Rabbit |
| Application | WB,IF,IP,ELISA |
| Reactivity | Human,Mouse,Rat |

Performance

| | |
|---------------------|--|
| Conjugation | Unconjugated |
| Modification | Unmodified |
| Isotype | IgG,Kappa |
| Clonality | Monoclonal |
| Form | Liquid |
| Storage | Store at 4°C short term. Aliquot and store at -20°C long term. Avoid freeze/thaw cycles. |
| Buffer | PBS, 50% glycerol, 0.05% Proclin 300, 0.05% protective protein |
| Purification | Protein A |

Immunogen

| | |
|--------------------------|---|
| Gene Name | STK11 |
| Alternative Names | STK11;LKB1;PJS;Serine/threonine-protein kinase STK11;Liver kinase B1;LKB1;hLKB1;Renal carcinoma antigen NY-REN-19 |
| Gene ID | 6794.0 |
| SwissProt ID | Q15831. |

Application

| | |
|-------------------------|---|
| Dilution Ratio | WB 1:2000-1:10000;IF 1:200-1:1000;ELISA 1:5000-1:20000;IP 1:50-1:200; |
| Molecular Weight | Calculated MW:49kD;Observed MW:60kD |

Background

Cell localization:Cytoplasm, Nucleus.This gene, which encodes a member of the serine/threonine kinase family, regulates

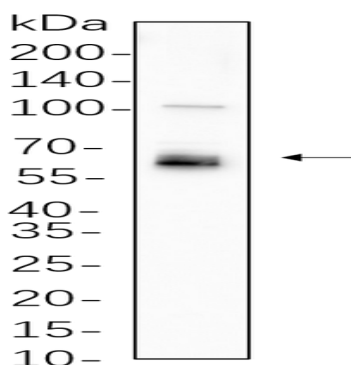
Product Name: LKB1 Rabbit Monoclonal Antibody
Catalog #: AMRe21287



cell polarity and functions as a tumor suppressor. Mutations in this gene have been associated with Peutz-Jeghers syndrome, an autosomal dominant disorder characterized by the growth of polyps in the gastrointestinal tract, pigmented macules on the skin and mouth, and other neoplasms. Alternate transcriptional splice variants of this gene have been observed but have not been thoroughly characterized. [provided by RefSeq, Jul 2008],

Research Area

Image Data



HEK293 cell lysates were separated by 4-20% SDS-PAGE, and the membrane was blotted with primary antibody 1:1000. The HRP-conjugated Goat anti-Rabbit IgG(H + L) antibody was used to detect the antibody.

Note

For research use only.