

Product Name: PDGFR- β Rabbit Monoclonal Antibody**Catalog #: AMRe21274**

For research use only.

Summary

Description	Recombinant rabbit monoclonal antibody
Host	Rabbit
Application	WB,IHC,ICC/IF,ELISA,IP
Reactivity	Human,Mouse,Rat
Conjugation	Unconjugated
Modification	Unmodified
Isotype	IgG,Kappa
Clonality	Monoclonal
Form	Liquid
Concentration	0.3mg/ml. The concentration of this product may be batch-dependent.
Storage	Aliquot and store at -20°C (valid for 12 months). Avoid freeze/thaw cycles.
Shipping	Ice bags
Buffer	PBS, 50% glycerol, 0.05% Proclin 300, 0.05%protective protein
Purification	Protein A

Application

Dilution Ratio	WB 1:2000-1:10000,IHC 1:200-1:1000,ICC/IF 1:200-1:1000,ELISA 1:5000-1:20000,IP 1:50-1:200
Molecular Weight	Calculated MW:124kD;Observed MW:190kD

Antigen Information

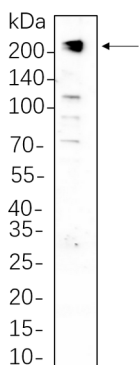
Gene Name	PDGFRB
Alternative Names	PDGFRB;PDGFR;PDGFR1;Platelet-derived growth factor receptor beta;PDGF-R-beta;PDGFR-beta;Beta platelet-derived growth factor receptor;Beta-type platelet-derived growth factor receptor;CD140 antigen-like family member B;Platelet-deri
Gene ID	5159.0
SwissProt ID	P09619
Immunogen	A synthetic peptide of human PDGFR beta

Background

Cell localization:Membrane.This gene encodes a cell surface tyrosine kinase receptor for members of the platelet-derived growth factor family. These growth factors are mitogens for cells of mesenchymal origin. The identity of the growth factor bound to a receptor monomer determines whether the functional receptor is a homodimer or a heterodimer, composed of both platelet-derived growth factor receptor alpha and beta polypeptides. This gene is flanked on chromosome 5 by the genes for granulocyte-macrophage colony-stimulating factor and macrophage-colony stimulating factor receptor; all three genes may be implicated in the 5-q syndrome. A translocation between chromosomes 5 and 12, that fuses this gene to that of the translocation, ETV6, leukemia gene, results in chronic myeloproliferative disorder with eosinophilia. [provided by RefSeq, Jul 2008],

Research Area

Image Data



C6 cell lysates were separated by 4-20% SDS-PAGE, and the membrane was blotted with PDGFR- β Rabbit Monoclonal Antibody 1:1000. The HRP-conjugated Goat anti-Rabbit IgG(H + L) antibody was used to detect the antibody.