

**Product Name: Synapsin I Rabbit Monoclonal Antibody****Catalog #: AMRe21272**

For research use only.

**Summary**

<b>Description</b>	Recombinant rabbit monoclonal antibody
<b>Host</b>	Rabbit
<b>Application</b>	WB,IHC,ICC/IF,ELISA,IP
<b>Reactivity</b>	Human,Mouse,Rat
<b>Conjugation</b>	Unconjugated
<b>Modification</b>	Unmodified
<b>Isotype</b>	IgG,Kappa
<b>Clonality</b>	Monoclonal
<b>Form</b>	Liquid
<b>Concentration</b>	0.3mg/ml. The concentration of this product may be batch-dependent.
<b>Storage</b>	Aliquot and store at -20°C (valid for 12 months). Avoid freeze/thaw cycles.
<b>Shipping</b>	Ice bags
<b>Buffer</b>	PBS, 50% glycerol, 0.05% Proclin 300, 0.05%protective protein
<b>Purification</b>	Protein A

**Application**

<b>Dilution Ratio</b>	WB 1:2000-1:10000,IHC 1:200-1:1000,ICC/IF 1:200-1:1000,ELISA 1:5000-1:20000,IP 1:50-1:200
<b>Molecular Weight</b>	Calculated MW:74kD;Observed MW:74,70kD

**Antigen Information**

<b>Gene Name</b>	SYN1
<b>Alternative Names</b>	SYN1;Synapsin-1;Brain protein 4.1;Synapsin I
<b>Gene ID</b>	6853.0
<b>SwissProt ID</b>	P17600
<b>Immunogen</b>	A synthetic peptide corresponding to target protein

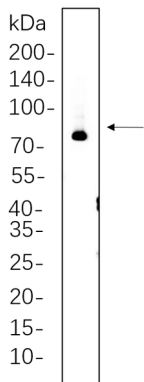
**Background**

Cell localization:Synapse.This gene is a member of the synapsin gene family. Synapsins encode neuronal phosphoproteins which associate with the cytoplasmic surface of synaptic vesicles. Family members are characterized by common protein

domains, and they are implicated in synaptogenesis and the modulation of neurotransmitter release, suggesting a potential role in several neuropsychiatric diseases. This member of the synapsin family plays a role in regulation of axonogenesis and synaptogenesis. The protein encoded serves as a substrate for several different protein kinases and phosphorylation may function in the regulation of this protein in the nerve terminal. Mutations in this gene may be associated with X-linked disorders with primary neuronal degeneration such as Rett syndrome. Alternatively spliced transcript variants encoding different isoforms have been identified. [provided by RefSeq, Jul 2008],

## Research Area

## Image Data



Mouse brain cell lysates were separated by 4-20% SDS-PAGE, and the membrane was blotted with Synapsin I Rabbit Monoclonal Antibody 1:1000. The HRP-conjugated Goat anti-Rabbit IgG(H + L) antibody was used to detect the antibody.