
Product Name: PAX6 Rabbit Monoclonal Antibody**Catalog #: AMRe21254**

For research use only.

Summary

Description	Recombinant rabbit monoclonal antibody
Host	Rabbit
Application	WB,IHC,IF,ELISA
Reactivity	Human,Mouse
Conjugation	Unconjugated
Modification	Unmodified
Isotype	IgG,Kappa
Clonality	Monoclonal
Form	Liquid
Concentration	0.3mg/ml. The concentration of this product may be batch-dependent.
Storage	Aliquot and store at -20°C (valid for 12 months). Avoid freeze/thaw cycles.
Shipping	Ice bags
Buffer	PBS, 50% glycerol, 0.05% Proclin 300, 0.05%protective protein
Purification	Protein A

Application

Dilution Ratio	IHC 1:200-1:1000;WB 1:2000-1:10000;IF 1:200-1:1000;ELISA 1:5000-1:20000;
Molecular Weight	Calculated MW:47kD;Observed MW:47kD

Antigen Information

Gene Name	PAX6 AN2
Alternative Names	Paired box protein Pax-6;Aniridia type II protein;Oculorhombin;
Gene ID	5080.0
SwissProt ID	P26367
Immunogen	Recombinant protein of human PAX6

Background

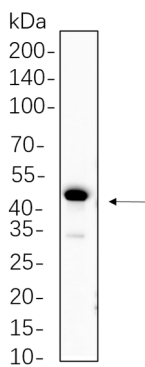
Cell localization:Nucleus.This gene encodes a homeobox and paired domain-containing protein that binds DNA and functions as a regulator of transcription. Activity of this protein is key in the development of neural tissues, particularly the eye. This gene is regulated by multiple enhancers located up to hundreds of kilobases distant from this locus. Mutations in this gene or in the

enhancer regions can cause ocular disorders such as aniridia and Peter's anomaly. Use of alternate promoters and alternative splicing result in multiple transcript variants encoding different isoforms. [provided by RefSeq, Jul 2015],

Research Area

Neuroscience; Epigenetics and Nuclear Signaling; Stem Cells; Developmental Biology

Image Data



HEK293 cell lysates were separated by 4-20% SDS-PAGE, and the membrane was blotted with PAX6 Rabbit Monoclonal Antibody 1:1000. The HRP-conjugated Goat anti-Rabbit IgG(H + L) antibody was used to detect the antibody.