
Product Name: GCLC Rabbit Monoclonal Antibody**Catalog #: AMRe21252**

For research use only.

Summary

Description	Recombinant rabbit monoclonal antibody
Host	Rabbit
Application	WB,ICC/IF,ELISA,IP
Reactivity	Human,Mouse,Rat
Conjugation	Unconjugated
Modification	Unmodified
Isotype	IgG,Kappa
Clonality	Monoclonal
Form	Liquid
Concentration	0.3mg/ml. The concentration of this product may be batch-dependent.
Storage	Aliquot and store at -20°C (valid for 12 months). Avoid freeze/thaw cycles.
Shipping	Ice bags
Buffer	PBS, 50% glycerol, 0.05% Proclin 300, 0.05%protective protein
Purification	Protein A

Application

Dilution Ratio	WB 1:2000-1:10000,ICC/IF 1:200-1:1000,ELISA 1:5000-1:20000,IP 1:50-1:200
Molecular Weight	Calculated MW:73kD;Observed MW:73kD

Antigen Information

Gene Name	GCLC
Alternative Names	GCLC;GLCL;GLCLC;Glutamate--cysteine ligase catalytic subunit;GCS heavy chain;Gamma-ECS;Gamma-glutamylcysteine synthetase
Gene ID	2729.0
SwissProt ID	P48506
Immunogen	A synthetic peptide of human GCLC

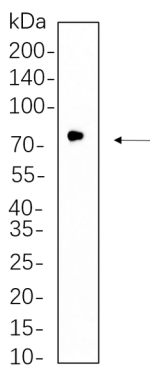
Background

Cell localization: Cytoplasm. Glutamate-cysteine ligase, also known as gamma-glutamylcysteine synthetase is the first rate-limiting enzyme of glutathione synthesis. The enzyme consists of two subunits, a heavy catalytic subunit and a light regulatory

subunit. This locus encodes the catalytic subunit, while the regulatory subunit is derived from a different gene located on chromosome 1p22-p21. Mutations at this locus have been associated with hemolytic anemia due to deficiency of gamma-glutamylcysteine synthetase and susceptibility to myocardial infarction.[provided by RefSeq, Oct 2010],

Research Area

Image Data



Hela cell lysates were separated by 4-20% SDS-PAGE, and the membrane was blotted with GCLC Rabbit Monoclonal Antibody 1:1000. The HRP-conjugated Goat anti-Rabbit IgG(H + L) antibody was used to detect the antibody.