

**Product Name: Granzyme B Rabbit Monoclonal Antibody****Catalog #: AMRe21246**

For research use only.

**Summary**

<b>Description</b>	Recombinant rabbit monoclonal antibody
<b>Host</b>	Rabbit
<b>Application</b>	WB,IHC,ICC/IF,ELISA,IP
<b>Reactivity</b>	Human,
<b>Conjugation</b>	Unconjugated
<b>Modification</b>	Unmodified
<b>Isotype</b>	IgG,Kappa
<b>Clonality</b>	Monoclonal
<b>Form</b>	Liquid
<b>Concentration</b>	0.3mg/ml. The concentration of this product may be batch-dependent.
<b>Storage</b>	Aliquot and store at -20°C (valid for 12 months). Avoid freeze/thaw cycles.
<b>Shipping</b>	Ice bags
<b>Buffer</b>	PBS, 50% glycerol, 0.05% Proclin 300, 0.05%protective protein
<b>Purification</b>	Protein A

**Application**

<b>Dilution Ratio</b>	WB 1:2000-1:10000,IHC 1:1000-1:4000,ICC/IF 1:200-1:1000,ELISA 1:5000-1:20000,IP 1:50-1:200
<b>Molecular Weight</b>	Calculated MW:28kD;Observed MW:37kD

**Antigen Information**

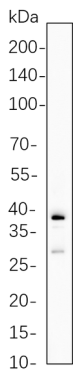
<b>Gene Name</b>	GZMB Granzyme B;C11;CTLA-1;Cathepsin G-like 1;CTSGL1;Cytotoxic T-lymphocyte proteinase
<b>Alternative Names</b>	2;Lymphocyte protease;Fragmentin-2;Granzyme-2;Human lymphocyte protein;HLP;SECT;T-cell serine protease 1-3E;
<b>Gene ID</b>	3002.0
<b>SwissProt ID</b>	P10144
<b>Immunogen</b>	A synthetic peptide of human Granzyme B

**Background**

Cell localization:Lysosome.This gene encodes a member of the granzyme subfamily of proteins, part of the peptidase S1 family of serine proteases. The encoded preproprotein is secreted by natural killer (NK) cells and cytotoxic T lymphocytes (CTLs) and proteolytically processed to generate the active protease, which induces target cell apoptosis. This protein also processes cytokines and degrades extracellular matrix proteins, and these roles are implicated in chronic inflammation and wound healing. Expression of this gene may be elevated in human patients with cardiac fibrosis. [provided by RefSeq, Sep 2016],

## Research Area

## Image Data



Karpas-299 cell lysates were separated by 4-20% SDS-PAGE, and the membrane was blotted with Granzyme B Rabbit Monoclonal Antibody 1:1000. The HRP-conjugated Goat anti-Rabbit IgG(H + L) antibody was used to detect the antibody.