
Product Name: SGSH Rabbit Monoclonal Antibody**Catalog #: AMRe21245**

For research use only.

Summary

Description	Recombinant rabbit monoclonal antibody
Host	Rabbit
Application	WB,IHC,ICC/IF
Reactivity	Human
Conjugation	Unconjugated
Modification	Unmodified
Isotype	IgG,Kappa
Clonality	Monoclonal
Form	Liquid
Concentration	0.2mg/ml. The concentration of this product may be batch-dependent.
Storage	Aliquot and store at -20°C (valid for 12 months). Avoid freeze/thaw cycles.
Shipping	Ice bags
Buffer	PBS, 50% glycerol, 0.05% Proclin 300, 0.05%protective protein
Purification	Protein A

Application

Dilution Ratio	WB 1:1000-1:5000,IHC 1:100-1:300,ICC/IF 1:100-1:300
Molecular Weight	Calculated MW::Observed MW:55kD

Antigen Information

Gene Name	SGSH;HSS
Alternative Names	SGSH;HSS;N-sulphoglucosamine sulphohydrolase ;Sulfoglucosamine sulfamidase;Sulphamidase;
Gene ID	6448.0
SwissProt ID	P51688
Immunogen	Recombinant protein of human SGSH

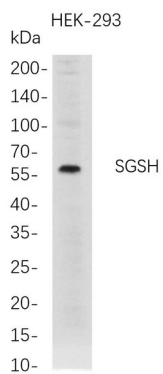
Background

Cell localization:Lysosome..This gene encodes the enzyme sulfamidase; one of several enzymes involved in the lysosomal degradation of heparan sulfate. Mutations in this gene are associated with the lysosomal storage disease mucopolysaccharidosis

IIIA, also known as Sanfilippo syndrome A, which results from impaired degradation of heparan sulfate. Transcripts of varying sizes have been reported but their biological validity has not been determined. [provided by RefSeq, Jun 2017]

Research Area

Image Data



Western Blot analysis of HEK-293 whole cell lysates were separated by 4-20% SDS-PAGE, and the membrane was blotted with anti-SGSH rabbit mAb. The HRP-conjugated Goat anti-Rabbit IgG(H + L) antibody was used to detect the antibody.