

Product Name: CPVL Rabbit Monoclonal Antibody**Catalog #: AMRe21244**

For research use only.

Summary

Description	Recombinant rabbit monoclonal antibody
Host	Rabbit
Application	WB,IHC
Reactivity	Human
Conjugation	Unconjugated
Modification	Unmodified
Isotype	IgG,Kappa
Clonality	Monoclonal
Form	Liquid
Concentration	0.2mg/ml. The concentration of this product may be batch-dependent.
Storage	Aliquot and store at -20°C (valid for 12 months). Avoid freeze/thaw cycles.
Shipping	Ice bags
Buffer	PBS, 50% glycerol, 0.05% Proclin 300, 0.05%protective protein
Purification	Protein A

Application

Dilution Ratio	WB 1:1000-1:5000,IHC 1:100-1:300
Molecular Weight	Calculated MW:;Observed MW:52kD

Antigen Information

Gene Name	CPVL;VLP;PSEC0124;UNQ197/PRO223 CPVL;VLP;PSEC0124;UNQ197/PRO223;Probable serine carboxypeptidase
Alternative Names	CPVL ;Carboxypeptidase, vitellogenic-like;Vitellogenic carboxypeptidase-like protein;VCP-like protein;hVLP;
Gene ID	54504.0
SwissProt ID	Q9H3G5
Immunogen	Recombinant protein of human CPVL

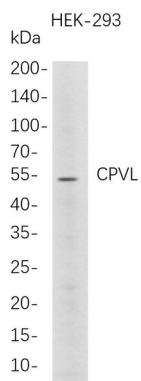
Background

The protein encoded by this gene is a carboxypeptidase and bears strong sequence similarity to serine carboxypeptidases.

Carboxypeptidases are a large class of proteases that act to cleave a single amino acid from the carboxy termini of proteins or peptides. The exact function of this protein, however, has not been determined. [provided by RefSeq, Jan 2017]

Research Area

Image Data



Western Blot analysis of HEK-293 whole cell lysates were separated by 4-20% SDS-PAGE, and the membrane was blotted with anti-CPVL rabbit mAb. The HRP-conjugated Goat anti-Rabbit IgG(H + L) antibody was used to detect the antibody.