

---

**Product Name: NBEAL2 Rabbit Monoclonal Antibody****Catalog #: AMRe21238**

For research use only.

**Summary**

<b>Description</b>	Recombinant rabbit monoclonal antibody
<b>Host</b>	Rabbit
<b>Application</b>	WB
<b>Reactivity</b>	Human
<b>Conjugation</b>	Unconjugated
<b>Modification</b>	Unmodified
<b>Isotype</b>	IgG,Kappa
<b>Clonality</b>	Monoclonal
<b>Form</b>	Liquid
<b>Concentration</b>	0.2mg/ml. The concentration of this product may be batch-dependent.
<b>Storage</b>	Aliquot and store at -20°C (valid for 12 months). Avoid freeze/thaw cycles.
<b>Shipping</b>	Ice bags
<b>Buffer</b>	PBS, 50% glycerol, 0.05% Proclin 300, 0.05%protective protein
<b>Purification</b>	Protein A

**Application**

<b>Dilution Ratio</b>	WB 1:1000-1:5000
<b>Molecular Weight</b>	Calculated MW;;Observed MW:303kD

**Antigen Information**

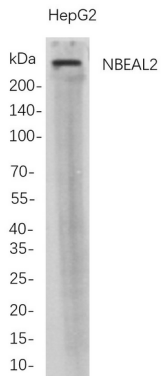
<b>Gene Name</b>	NBEAL2;KIAA0540
<b>Alternative Names</b>	NBEAL2;KIAA0540;UNQ253/PRO290;Neurobeachin-like protein 2;
<b>Gene ID</b>	23218.0
<b>SwissProt ID</b>	Q6ZNJ1
<b>Immunogen</b>	A synthetic peptide of human NBEAL2

**Background**

Cell localization:Endoplasmic reticulum..The protein encoded by this gene contains a beige and Chediak-Higashi (BEACH) domain and multiple WD40 domains, and may play a role in megakaryocyte alpha-granule biogenesis. Mutations in this gene are a cause of gray platelet syndrome. [provided by RefSeq, Dec 2011]

## Research Area

## Image Data



Western Blot analysis of HepG2 whole cell lysates were separated by 4-20% SDS-PAGE, and the membrane was blotted with anti-NBEAL2 rabbit mAb. The HRP-conjugated Goat anti-Rabbit IgG(H + L) antibody was used to detect the antibody.