
Product Name: Map17 Rabbit Monoclonal Antibody**Catalog #: AMRe21236**

For research use only.

Summary

Description	Recombinant rabbit monoclonal antibody
Host	Rabbit
Application	WB,IP
Reactivity	Human
Conjugation	Unconjugated
Modification	Unmodified
Isotype	IgG,Kappa
Clonality	Monoclonal
Form	Liquid
Concentration	0.2mg/ml. The concentration of this product may be batch-dependent.
Storage	Aliquot and store at -20°C (valid for 12 months). Avoid freeze/thaw cycles.
Shipping	Ice bags
Buffer	PBS, 50% glycerol, 0.05% Proclin 300, 0.05%protective protein
Purification	Protein A

Application

Dilution Ratio	WB 1:1000-1:5000,IP 1:50-1:100
Molecular Weight	Calculated MW;;Observed MW:13kD

Antigen Information

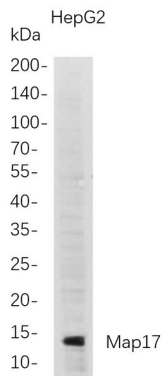
Gene Name	PDZK1IP1;MAP17
Alternative Names	PDZK1IP1;MAP17;PDZK1-interacting protein 1 ;17 kDa membrane-associated protein;Protein DD96;
Gene ID	10158.0
SwissProt ID	Q13113
Immunogen	Recombinant protein of human Map17

Background

Cell localization:Apical cell membrane; Single-pass membrane protein..Located in extracellular exosome. [provided by Alliance of Genome Resources, Feb 2025]

Research Area

Image Data



Western Blot analysis of HepG2 whole cell lysates were separated by 4-20% SDS-PAGE, and the membrane was blotted with anti-Map17 rabbit mAb. The HRP-conjugated Goat anti-Rabbit IgG(H + L) antibody was used to detect the antibody.