
Product Name: Prostein Rabbit Monoclonal Antibody**Catalog #: AMRe21233**

For research use only.

Summary

Description	Recombinant rabbit monoclonal antibody
Host	Rabbit
Application	IHC
Reactivity	Human
Conjugation	Unconjugated
Modification	Unmodified
Isotype	IgG,Kappa
Clonality	Monoclonal
Form	Liquid
Concentration	0.3mg/ml. The concentration of this product may be batch-dependent.
Storage	Aliquot and store at -20°C (valid for 12 months). Avoid freeze/thaw cycles.
Shipping	Ice bags
Buffer	PBS, 50% glycerol, 0.05% Proclin 300, 0.05%protective protein
Purification	Protein A

Application

Dilution Ratio	IHC 1:100-1:300
Molecular Weight	Calculated MW;;Observed MW:61kD

Antigen Information

Gene Name	SLC45A3
Alternative Names	SLC45A3;PCANAP6;PRST;Solute carrier family 45 member 3 ;Prostate cancer-associated protein 6;Prostein;
Gene ID	85414.0
SwissProt ID	Q96JT2
Immunogen	A synthetic peptide of human Prostein

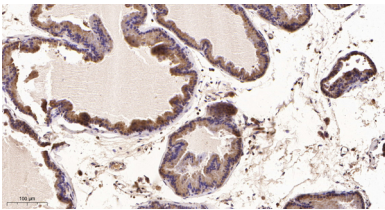
Background

Cell localization:Membrane; Multi-pass membrane protein..Predicted to enable sucrose:proton symporter activity. Predicted to be involved in positive regulation of small molecule metabolic process; regulation of oligodendrocyte differentiation; and

sucrose transport. Predicted to be located in plasma membrane. Predicted to be active in membrane. [provided by Alliance of Genome Resources, Apr 2022]

Research Area

Image Data



Immunohistochemical analysis of paraffin-embedded human Prostate tissue. 1,Prostein Rabbit Monoclonal Antibody was diluted at 1:200(4°C,overnight). 2, EDTA pH 9.0 was used for antibody retrieval(>98°C,20min). 3,Secondary antibody was diluted at 1:200(room temperature, 30min).