
Product Name: TSFM Rabbit Monoclonal Antibody**Catalog #: AMRe21231**

For research use only.

Summary

Description	Recombinant rabbit monoclonal antibody
Host	Rabbit
Application	WB,ICC/IF
Reactivity	Human
Conjugation	Unconjugated
Modification	Unmodified
Isotype	IgG,Kappa
Clonality	Monoclonal
Form	Liquid
Concentration	0.2mg/ml. The concentration of this product may be batch-dependent.
Storage	Aliquot and store at -20°C (valid for 12 months). Avoid freeze/thaw cycles.
Shipping	Ice bags
Buffer	PBS, 50% glycerol, 0.05% Proclin 300, 0.05%protective protein
Purification	Protein A

Application

Dilution Ratio	WB 1:1000-1:5000,ICC/IF 1:100-1:300
Molecular Weight	Calculated MW;;Observed MW:36kD

Antigen Information

Gene Name	TSFM
Alternative Names	TSFM;Elongation factor Ts, mitochondrial ;EF-Ts;EF-TsMt;
Gene ID	10102.0
SwissProt ID	P43897
Immunogen	A synthetic peptide of human TSFM

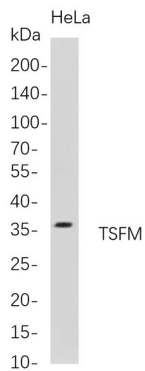
Background

Cell localization:Mitochondrion..This gene encodes a mitochondrial translation elongation factor. The encoded protein is an enzyme that catalyzes the exchange of guanine nucleotides on the translation elongation factor Tu during the elongation step of mitochondrial protein translation. Mutations in this gene are associated with combined oxidative phosphorylation deficiency-

3 syndrome. Alternate splicing results in multiple transcript variants.[provided by RefSeq, Mar 2010]

Research Area

Image Data



Western Blot analysis of HeLa whole cell lysates were separated by 4-20% SDS-PAGE, and the membrane was blotted with anti-TSFM rabbit mAb. The HRP-conjugated Goat anti-Rabbit IgG(H + L) antibody was used to detect the antibody.