

Product Name: LRMP Rabbit Monoclonal Antibody**Catalog #: AMRe21228**

For research use only.

Summary

| | |
|----------------------|-----------------------------------------------------------------------------|
| Description | Recombinant rabbit monoclonal antibody |
| Host | Rabbit |
| Application | WB,IHC,ICC/IF,FC |
| Reactivity | Human |
| Conjugation | Unconjugated |
| Modification | Unmodified |
| Isotype | IgG,Kappa |
| Clonality | Monoclonal |
| Form | Liquid |
| Concentration | 0.2mg/ml. The concentration of this product may be batch-dependent. |
| Storage | Aliquot and store at -20°C (valid for 12 months). Avoid freeze/thaw cycles. |
| Shipping | Ice bags |
| Buffer | PBS, 50% glycerol, 0.05% Proclin 300, 0.05%protective protein |
| Purification | Protein A |

Application

| | |
|-------------------------|--------------------------------------------------------------------|
| Dilution Ratio | WB 1:1000-1:5000,IHC 1:100-1:300,ICC/IF 1:100-1:300,FC 1:100-1:300 |
| Molecular Weight | Calculated MW::Observed MW:61kD |

Antigen Information

| | |
|--------------------------|-------------------------------------------------------------------------------------------------------------|
| Gene Name | IRAG2;JAW1;LRMP IRAG2;JAW1;LRMP;Inositol 1,4,5-triphosphate receptor associated 2 ;Lymphoid-restricted |
| Alternative Names | membrane protein;Protein Jaw1; [Cleaved into: Processed inositol 1,4,5-triphosphate receptor associated 2]; |
| Gene ID | 4033.0 |
| SwissProt ID | Q12912 |
| Immunogen | Recombinant protein of human LRMP |

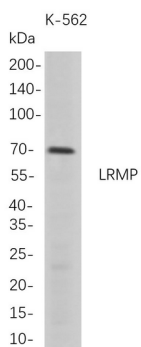
Background

Cell localization:[Processed inositol 1,4,5-triphosphate receptor associated 2]: Cytoplasm.; Endoplasmic reticulum membrane;

Single-pass type IV membrane protein. Nucleus envelope. Cytoplasm, cytoskeleton, microtubule organizing center, centrosome. Cytoplasm, cytoskeleton, spindle pole. Chromosome. Note=Colocalized with ITPR3 on the endoplasmic reticulum membrane...The protein encode dbp by this gene is expressed in a developmentally regulated manner in lymphoid cell lines and tissues. The protein is localized to the cytoplasmic face of the endoplasmic reticulum. [provided by RefSeq, Jul 2008]

Research Area

Image Data



Western Blot analysis of K-562 whole cell lysates were separated by 4-20% SDS-PAGE, and the membrane was blotted with anti-LRMP rabbit mAb. The HRP-conjugated Goat anti-Rabbit IgG(H + L) antibody was used to detect the antibody.