

Product Name: KLHL6 Rabbit Monoclonal Antibody**Catalog #: AMRe21227**

For research use only.

Summary

Description	Recombinant rabbit monoclonal antibody
Host	Rabbit
Application	WB,ICC/IF,IP
Reactivity	Human
Conjugation	Unconjugated
Modification	Unmodified
Isotype	IgG,Kappa
Clonality	Monoclonal
Form	Liquid
Concentration	0.2mg/ml. The concentration of this product may be batch-dependent.
Storage	Aliquot and store at -20°C (valid for 12 months). Avoid freeze/thaw cycles.
Shipping	Ice bags
Buffer	PBS, 50% glycerol, 0.05% Proclin 300, 0.05%protective protein
Purification	Protein A

Application

Dilution Ratio	WB 1:1000-1:5000,ICC/IF 1:100-1:300,IP 1:50-1:100
Molecular Weight	Calculated MW:;Observed MW:68kD

Antigen Information

Gene Name	KLHL6
Alternative Names	KLHL6;Kelch-like protein 6;
Gene ID	89857.0
SwissProt ID	Q8WZ60
Immunogen	Recombinant protein of human KLHL6

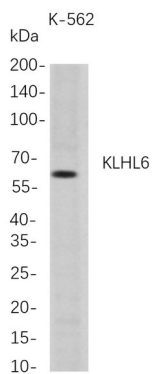
Background

This gene encodes a member of the kelch-like (KLHL) family of proteins, which is involved in B-lymphocyte antigen receptor signaling and germinal-center B-cell maturation. The encoded protein contains an N-terminal broad-complex, tramtrack and bric a brac (BTB) domain that facilitates protein binding and dimerization, a BTB and C-terminal kelch (BACK) domain, and six C-

terminal kelch repeat domains. Naturally occurring mutations in this gene are associated with chronic lymphocytic leukemia. Alternative splicing results in multiple transcript variants. [provided by RefSeq, Feb 2017]

Research Area

Image Data



Western Blot analysis of K-562 whole cell lysates were separated by 4-20% SDS-PAGE, and the membrane was blotted with anti-KLHL6 rabbit mAb. The HRP-conjugated Goat anti-Rabbit IgG(H + L) antibody was used to detect the antibody.