

Product Name: PTDSS2 Rabbit Monoclonal Antibody**Catalog #: AMRe21226**

For research use only.

Summary

Description	Recombinant rabbit monoclonal antibody
Host	Rabbit
Application	WB,FC,IP
Reactivity	Human
Conjugation	Unconjugated
Modification	Unmodified
Isotype	IgG,Kappa
Clonality	Monoclonal
Form	Liquid
Concentration	0.2mg/ml. The concentration of this product may be batch-dependent.
Storage	Aliquot and store at -20°C (valid for 12 months). Avoid freeze/thaw cycles.
Shipping	Ice bags
Buffer	PBS, 50% glycerol, 0.05% Proclin 300, 0.05%protective protein
Purification	Protein A

Application

Dilution Ratio	WB 1:1000-1:5000,FC 1:100-1:300,IP 1:50-1:100
Molecular Weight	Calculated MW:;Observed MW:54kD

Antigen Information

Gene Name	PTDSS2;PSS2
Alternative Names	PTDSS2;PSS2;Phosphatidylserine synthase 2 ;PSS-2;PtdSer synthase 2;Serine-exchange enzyme II;
Gene ID	81490.0
SwissProt ID	Q9BVG9
Immunogen	Recombinant protein of human PTDSS2

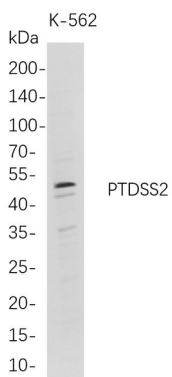
Background

Cell localization:Endoplasmic reticulum membrane; Multi-pass membrane protein. Note=Highly enriched in the mitochondria-associated membrane (MAM)...The protein encoded by this gene catalyzes the conversion of phosphatidylethanolamine to

phosphatidylserine, a structural membrane phospholipid that functions in cell signaling, blood coagulation, and apoptosis. The encoded enzyme also has a high affinity for docosahexaenoic acid (DHA) and can use it to make DHA-containing phosphatidylserine. [provided by RefSeq, Jul 2016]

Research Area

Image Data



Western Blot analysis of K-562 whole cell lysates were separated by 4-20% SDS-PAGE, and the membrane was blotted with anti-PTDSS2 rabbit mAb. The HRP-conjugated Goat anti-Rabbit IgG(H + L) antibody was used to detect the antibody.