
Product Name: PACSIN3 Rabbit Monoclonal Antibody**Catalog #: AMRe21225**

For research use only.

Summary

Description	Recombinant rabbit monoclonal antibody
Host	Rabbit
Application	WB,IHC,ICC/IF,FC,IP
Reactivity	Human
Conjugation	Unconjugated
Modification	Unmodified
Isotype	IgG,Kappa
Clonality	Monoclonal
Form	Liquid
Concentration	0.2mg/ml. The concentration of this product may be batch-dependent.
Storage	Aliquot and store at -20°C (valid for 12 months). Avoid freeze/thaw cycles.
Shipping	Ice bags
Buffer	PBS, 50% glycerol, 0.05% Proclin 300, 0.05%protective protein
Purification	Protein A

Application

Dilution Ratio	WB 1:1000-1:5000,IHC 1:100-1:300,ICC/IF 1:100-1:300,FC 1:100-1:300,IP 1:50-1:100
Molecular Weight	Calculated MW;;Observed MW:47kD

Antigen Information

Gene Name	PACSIN3
Alternative Names	PACSIN3;Protein kinase C and casein kinase substrate in neurons protein 3 ;SH3 domain-containing protein 6511;
Gene ID	29763.0
SwissProt ID	Q9UKS6
Immunogen	A synthetic peptide of human PACSIN3

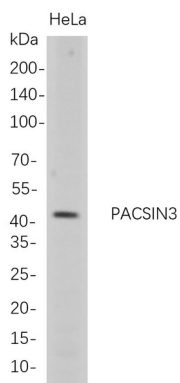
Background

Cell localization: Cytoplasm. Cell membrane; Peripheral membrane protein; Cytoplasmic side. Note=Detected at the inner aspect of the plasma membrane in myotubes...This gene is a member of the protein kinase C and casein kinase substrate in

neurons family. The encoded protein is involved in linking the actin cytoskeleton with vesicle formation. Alternative splicing results in multiple transcript variants. [provided by RefSeq, May 2010]

Research Area

Image Data



Western Blot analysis of HeLa whole cell lysates were separated by 4-20% SDS-PAGE, and the membrane was blotted with anti-PACSIN3 rabbit mAb. The HRP-conjugated Goat anti-Rabbit IgG(H + L) antibody was used to detect the antibody.