

Product Name: 53BP2/ASPP2 Rabbit Monoclonal Antibody**Catalog #: AMRe21222**

For research use only.

Summary

Description	Recombinant rabbit monoclonal antibody
Host	Rabbit
Application	WB,IHC,ICC/IF
Reactivity	Human
Conjugation	Unconjugated
Modification	Unmodified
Isotype	IgG,Kappa
Clonality	Monoclonal
Form	Liquid
Concentration	0.2mg/ml. The concentration of this product may be batch-dependent.
Storage	Aliquot and store at -20°C (valid for 12 months). Avoid freeze/thaw cycles.
Shipping	Ice bags
Buffer	PBS, 50% glycerol, 0.05% Proclin 300, 0.05%protective protein
Purification	Protein A

Application

Dilution Ratio	WB 1:1000-1:5000,IHC 1:100-1:300,ICC/IF 1:100-1:300
Molecular Weight	Calculated MW::Observed MW:124kD

Antigen Information

Gene Name	TP53BP2;ASPP2;BBP TP53BP2;ASPP2;BBP;Apoptosis-stimulating of p53 protein 2 ;Bcl2-binding protein;Bbp;Renal
Alternative Names	carcinoma antigen NY-REN-51;Tumor suppressor p53-binding protein 2;53BP2;p53-binding protein 2;p53BP2;
Gene ID	7159.0
SwissProt ID	Q13625
Immunogen	A synthetic peptide of human 53BP2/ASPP2

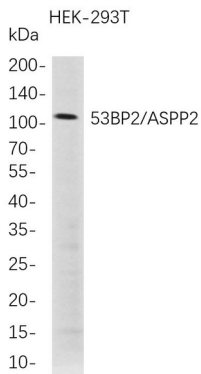
Background

Cell localization:Cytoplasm, perinuclear region. Nucleus. Note=Predominantly found in the perinuclear region. Some small

fraction is nuclear. Sequester in the cytoplasm on overexpression of DDX42..This gene encodes a member of the ASPP (apoptosis-stimulating protein of p53) family of p53 interacting proteins. The protein contains four ankyrin repeats and an SH3 domain involved in protein-protein interactions. It is localized to the perinuclear region of the cytoplasm, and regulates apoptosis and cell growth through interactions with other regulatory molecules including members of the p53 family. Multiple transcript variants encoding different isoforms have been found for this gene. [provided by RefSeq, Jul 2008],

Research Area

Image Data



Western Blot analysis of HEK-293T whole cell lysates were separated by 4-20% SDS-PAGE, and the membrane was blotted with anti-53BP2/ASPP2 rabbit mAb. The HRP-conjugated Goat anti-Rabbit IgG(H + L) antibody was used to detect the antibody.