
Product Name: TAF1C Rabbit Monoclonal Antibody**Catalog #: AMRe21221**

For research use only.

Summary

Description	Recombinant rabbit monoclonal antibody
Host	Rabbit
Application	WB,IP
Reactivity	Human
Conjugation	Unconjugated
Modification	Unmodified
Isotype	IgG,Kappa
Clonality	Monoclonal
Form	Liquid
Concentration	0.2mg/ml. The concentration of this product may be batch-dependent.
Storage	Aliquot and store at -20°C (valid for 12 months). Avoid freeze/thaw cycles.
Shipping	Ice bags
Buffer	PBS, 50% glycerol, 0.05% Proclin 300, 0.05%protective protein
Purification	Protein A

Application

Dilution Ratio	WB 1:1000-1:5000,IP 1:50-1:100
Molecular Weight	Calculated MW;;Observed MW:96kD

Antigen Information

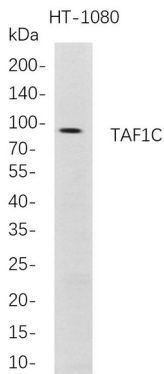
Gene Name	TAF1C
Alternative Names	TAF1C;TATA box-binding protein-associated factor RNA polymerase I subunit C ;RNA polymerase I-specific TBP-associated factor 110 kDa;TAFI110;TATA box-binding protein-associated factor 1C;TBP-associated factor 1C;Transcription initiation factor SL1/TIF-IB subunit C;
Gene ID	9013.0
SwissProt ID	Q15572
Immunogen	A synthetic peptide of human TAF1C

Background

Cell localization:Nucleus, nucleolus..Initiation of transcription by RNA polymerase I requires the formation of a complex composed of the TATA-binding protein (TBP) and three TBP-associated factors (TAFs) specific for RNA polymerase I. This complex, known as SL1, binds to the core promoter of ribosomal RNA genes to position the polymerase properly and acts as a channel for regulatory signals. This gene encodes the largest SL1-specific TAF. Multiple alternatively spliced transcript variants encoding different isoforms have been identified. [provided by RefSeq, Jul 2011]

Research Area

Image Data



Western Blot analysis of HT-1080 whole cell lysates were separated by 4-20% SDS-PAGE, and the membrane was blotted with anti-TAF1C rabbit mAb. The HRP-conjugated Goat anti-Rabbit IgG(H + L) antibody was used to detect the antibody.