

Product Name: KCTD9 Rabbit Monoclonal Antibody**Catalog #: AMRe21218**

For research use only.

Summary

Description	Recombinant rabbit monoclonal antibody
Host	Rabbit
Application	WB,ICC/IF
Reactivity	Human
Conjugation	Unconjugated
Modification	Unmodified
Isotype	IgG,Kappa
Clonality	Monoclonal
Form	Liquid
Concentration	0.2mg/ml. The concentration of this product may be batch-dependent.
Storage	Aliquot and store at -20°C (valid for 12 months). Avoid freeze/thaw cycles.
Shipping	Ice bags
Buffer	PBS, 50% glycerol, 0.05% Proclin 300, 0.05%protective protein
Purification	Protein A

Application

Dilution Ratio	WB 1:1000-1:5000,ICC/IF 1:100-1:300
Molecular Weight	Calculated MW::Observed MW:43kD

Antigen Information

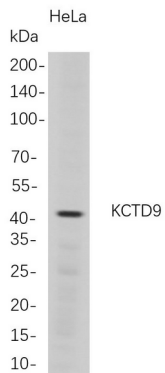
Gene Name	KCTD9
Alternative Names	KCTD9;BTB/POZ domain-containing protein KCTD9;
Gene ID	54793.0
SwissProt ID	Q7L273
Immunogen	A synthetic peptide of human KCTD9

Background

Enables cullin family protein binding activity and identical protein binding activity. Predicted to be involved in intracellular signal transduction; protein homooligomerization; and protein ubiquitination. [provided by Alliance of Genome Resources, Feb 2025]

Research Area

Image Data



Western Blot analysis of HeLa whole cell lysates were separated by 4-20% SDS-PAGE, and the membrane was blotted with anti-KCTD9 rabbit mAb. The HRP-conjugated Goat anti-Rabbit IgG(H + L) antibody was used to detect the antibody.