

**Product Name: ACTL8 Rabbit Monoclonal Antibody****Catalog #: AMRe21216**

For research use only.

**Summary**

|                      |   |
|----------------------|---|
| <b>Description</b>   | Recombinant rabbit monoclonal antibody                                      |
| <b>Host</b>          | Rabbit  |
| <b>Application</b>   | WB,FC,IP  |
| <b>Reactivity</b>    | Human   |
| <b>Conjugation</b>   | Unconjugated  |
| <b>Modification</b>  | Unmodified  |
| <b>Isotype</b>       | IgG,Kappa   |
| <b>Clonality</b>     | Monoclonal  |
| <b>Form</b>          | Liquid  |
| <b>Concentration</b> | 0.2mg/ml. The concentration of this product may be batch-dependent.         |
| <b>Storage</b>       | Aliquot and store at -20°C (valid for 12 months). Avoid freeze/thaw cycles. |
| <b>Shipping</b>      | Ice bags  |
| <b>Buffer</b>        | PBS, 50% glycerol, 0.05% Proclin 300, 0.05%protective protein               |
| <b>Purification</b>  | Protein A   |

**Application**

|                         |   |
|-------------------------|---|
| <b>Dilution Ratio</b>   | WB 1:1000-1:5000,FC 1:100-1:300,IP 1:50-1:100 |
| <b>Molecular Weight</b> | Calculated MW:;Observed MW:40kD               |

**Antigen Information**

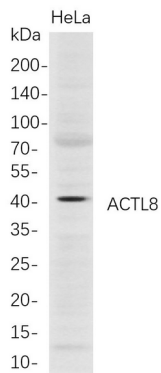
|                          |  |
|--------------------------|--|
| <b>Gene Name</b>         | ACTL8  |
| <b>Alternative Names</b> | ACTL8;Actin-like protein 8 ;Cancer/testis antigen 57;CT57; |
| <b>Gene ID</b>           | 81569.0  |
| <b>SwissProt ID</b>      | Q9H568   |
| <b>Immunogen</b>         | A synthetic peptide of human ACTL8                         |

**Background**

Cell localization:Cytoplasm, cytoskeleton..Involved in epithelial cell differentiation. Predicted to be located in cytoplasm and cytoskeleton. Predicted to be active in actin filament; stress fiber; and striated muscle thin filament. [provided by Alliance of Genome Resources, Feb 2025]

## Research Area

## Image Data



Western Blot analysis of HeLa whole cell lysates were separated by 4-20% SDS-PAGE, and the membrane was blotted with anti-ACTL8 rabbit mAb. The HRP-conjugated Goat anti-Rabbit IgG(H + L) antibody was used to detect the antibody.