

Product Name: RAVER2 Rabbit Monoclonal Antibody**Catalog #: AMRe21215**

For research use only.

Summary

Description	Recombinant rabbit monoclonal antibody
Host	Rabbit
Application	WB,IHC,ICC/IF,IP
Reactivity	Human
Conjugation	Unconjugated
Modification	Unmodified
Isotype	IgG,Kappa
Clonality	Monoclonal
Form	Liquid
Concentration	0.2mg/ml. The concentration of this product may be batch-dependent.
Storage	Aliquot and store at -20°C (valid for 12 months). Avoid freeze/thaw cycles.
Shipping	Ice bags
Buffer	PBS, 50% glycerol, 0.05% Proclin 300, 0.05%protective protein
Purification	Protein A

Application

Dilution Ratio	WB 1:1000-1:5000,IHC 1:100-1:300,ICC/IF 1:100-1:300,IP 1:50-1:100
Molecular Weight	Calculated MW:;Observed MW:76kD

Antigen Information

Gene Name	RAVER2;KIAA1579
Alternative Names	RAVER2;KIAA1579;Ribonucleoprotein PTB-binding 2 ;Protein raver-2;
Gene ID	55225.0
SwissProt ID	Q9HCJ3
Immunogen	Recombinant protein of human RAVER2

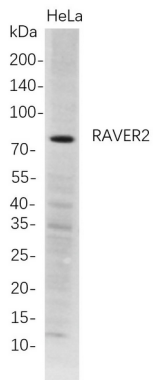
Background

Cell localization:Nucleus. Cytoplasm. Note=May shuttle between the nucleus and the cytoplasm...Enables RNA binding activity.

Predicted to be located in cytoplasm and nucleus. [provided by Alliance of Genome Resources, Feb 2025]

Research Area

Image Data



Western Blot analysis of HeLa whole cell lysates were separated by 4-20% SDS-PAGE, and the membrane was blotted with anti-RAVER2 rabbit mAb. The HRP-conjugated Goat anti-Rabbit IgG(H + L) antibody was used to detect the antibody.