
Product Name: PHYHD1 Rabbit Monoclonal Antibody**Catalog #: AMRe21213**

For research use only.

Summary

| | |
|----------------------|---|
| Description | Recombinant rabbit monoclonal antibody |
| Host | Rabbit |
| Application | WB,ICC/IF,FC |
| Reactivity | Human |
| Conjugation | Unconjugated |
| Modification | Unmodified |
| Isotype | IgG,Kappa |
| Clonality | Monoclonal |
| Form | Liquid |
| Concentration | 0.2mg/ml. The concentration of this product may be batch-dependent. |
| Storage | Aliquot and store at -20°C (valid for 12 months). Avoid freeze/thaw cycles. |
| Shipping | Ice bags |
| Buffer | PBS, 50% glycerol, 0.05% Proclin 300, 0.05%protective protein |
| Purification | Protein A |

Application

| | |
|-------------------------|--|
| Dilution Ratio | WB 1:1000-1:5000,ICC/IF 1:100-1:300,FC 1:100-1:300 |
| Molecular Weight | Calculated MW::Observed MW:32kD |

Antigen Information

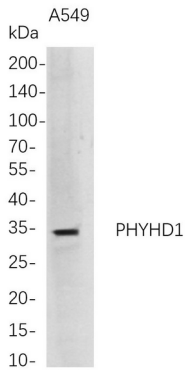
| | |
|--------------------------|---|
| Gene Name | PHYHD1 |
| Alternative Names | PHYHD1;Phytanoyl-CoA dioxygenase domain-containing protein 1 ;Protein PHYHD1; |
| Gene ID | 254295.0 |
| SwissProt ID | Q5SRE7 |
| Immunogen | A synthetic peptide of human PHYHD1 |

Background

Enables 2-oxoglutarate-dependent dioxygenase activity. [provided by Alliance of Genome Resources, Feb 2025]

Research Area

Image Data



Western Blot analysis of A549 whole cell lysates were separated by 4-20% SDS-PAGE, and the membrane was blotted with anti-PHYHD1 rabbit mAb. The HRP-conjugated Goat anti-Rabbit IgG(H + L) antibody was used to detect the antibody.