
Product Name: GCET2 Rabbit Monoclonal Antibody**Catalog #: AMRe21212**

For research use only.

Summary

Description	Recombinant rabbit monoclonal antibody
Host	Rabbit
Application	IHC,ICC/IF,FC
Reactivity	Human
Conjugation	Unconjugated
Modification	Unmodified
Isotype	IgG,Kappa
Clonality	Monoclonal
Form	Liquid
Concentration	0.3mg/ml. The concentration of this product may be batch-dependent.
Storage	Aliquot and store at -20°C (valid for 12 months). Avoid freeze/thaw cycles.
Shipping	Ice bags
Buffer	PBS, 50% glycerol, 0.05% Proclin 300, 0.05%protective protein
Purification	Protein A

Application

Dilution Ratio	IHC 1:100-1:300,ICC/IF 1:100-1:300,FC 1:100-1:300
Molecular Weight	Calculated MW;;Observed MW:20kD

Antigen Information

Gene Name	GCSAM GCSAM;GAL;GCET2;Germinal center-associated signaling and motility protein ;Germinal
Alternative Names	center B-cell-expressed transcript 2 protein;Germinal center-associated lymphoma protein;hGAL;
Gene ID	257144.0
SwissProt ID	Q8N6F7
Immunogen	Recombinant protein of human GCET2

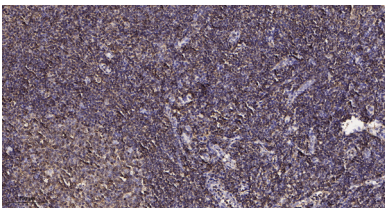
Background

Cell localization:Cytoplasm. Cell membrane. Note=It relocalizes from the cytoplasm to podosome-like structures upon cell

treatment with IL6..This gene encodes a protein which may function in signal transduction pathways and whose expression is elevated in germinal cell lymphomas. It contains a putative PDZ-interacting domain, an immunoreceptor tyrosine-based activation motif (ITAM), and two putative SH2 binding sites. In B cells, its expression is specifically induced by interleukin-4. Alternative splicing results in multiple transcript variants encoding different isoforms. [provided by RefSeq, Jul 2008]

Research Area

Image Data



Immunohistochemical analysis of paraffin-embedded human tonsil tissue. 1,GCET2 Rabbit Monoclonal Antibody was diluted at 1:200(4°C,overnight). 2, EDTA pH 9.0 was used for antibody retrieval(>98°C,20min). 3,Secondary antibody was diluted at 1:200(room temperature, 30min).