
Product Name: CSHL1 Rabbit Monoclonal Antibody**Catalog #: AMRe21207**

For research use only.

Summary

Description	Recombinant rabbit monoclonal antibody
Host	Rabbit
Application	WB,IHC
Reactivity	Human
Conjugation	Unconjugated
Modification	Unmodified
Isotype	IgG,Kappa
Clonality	Monoclonal
Form	Liquid
Concentration	0.2mg/ml. The concentration of this product may be batch-dependent.
Storage	Aliquot and store at -20°C (valid for 12 months). Avoid freeze/thaw cycles.
Shipping	Ice bags
Buffer	PBS, 50% glycerol, 0.05% Proclin 300, 0.05%protective protein
Purification	Protein A

Application

Dilution Ratio	WB 1:1000-1:5000,IHC 1:100-1:300
Molecular Weight	Calculated MW;;Observed MW:24kD

Antigen Information

Gene Name	CSHL1;CSHP1;CSL
Alternative Names	CSHL1;CSHP1;CSL;Chorionic somatomammotropin hormone-like 1 ;Chorionic somatomammotropin-like;Lactogen-like;
Gene ID	1444.0
SwissProt ID	Q14406
Immunogen	Recombinant protein of human CSHL1

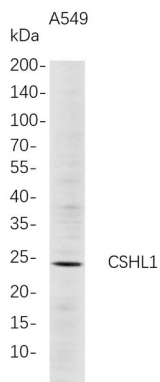
Background

Cell localization:Secreted..The protein encoded by this gene is a member of the somatotropin/prolactin family of hormones which play an important role in growth control. The gene, along with four other related genes, is located at the growth

hormone locus on chromosome 17 where they are interspersed in the same transcriptional orientation; an arrangement which is thought to have evolved by a series of gene duplications. Although the five genes share a remarkably high degree of sequence identity, they are expressed selectively in different tissues. This particular family member is expressed in placental villi, although it was originally thought to be a pseudogene. In fact, alternative splicing suggests that the majority of the transcripts would be unable to express a secreted protein. Alternatively spliced transcript variants encoding different isoforms have been identified. [provided by RefSeq, Jul 2008]

Research Area

Image Data



Western Blot analysis of A549 whole cell lysates were separated by 4-20% SDS-PAGE, and the membrane was blotted with anti-CSHL1 rabbit mAb. The HRP-conjugated Goat anti-Rabbit IgG(H + L) antibody was used to detect the antibody.