

Product Name: JNK1/2/3 Rabbit Monoclonal Antibody
Catalog #: AMRe21196



Summary

Production Name	JNK1/2/3 Rabbit Monoclonal Antibody
Description	Rabbit Monoclonal Antibody
Host	Rabbit
Application	WB,IF,IP,ELISA
Reactivity	Human,Mouse,Rat

Performance

Conjugation	Unconjugated
Modification	Unmodified
Isotype	IgG,Kappa
Clonality	Monoclonal
Form	Liquid
Storage	Store at 4°C short term. Aliquot and store at -20°C long term. Avoid freeze/thaw cycles.
Buffer	PBS, 50% glycerol, 0.05% Proclin 300, 0.05% protective protein
Purification	Protein A

Immunogen

Gene Name	MAPK8/9/10 MAPK8;JNK1;PRKM8;SAPK1;SAPK1C;Mitogen-activated protein kinase 8;MAP kinase 8;MAPK 8;JNK-46;Stress-activated protein kinase 1c;SAPK1c;Stress-activated protein kinase JNK1;c-Jun N-terminal kinase 1;MAPK9;JNK2;PRKM9;SAPK1A;Mi
Alternative Names	
Gene ID	5599;5601;5602
SwissProt ID	P45983;P45984;P53779.

Application

Dilution Ratio	WB 1:2000-1:10000;IF 1:200-1:1000;ELISA 1:5000-1:20000;IP 1:50-1:200;
Molecular Weight	Calculated MW:48,53kD;Observed MW:48,53kD

Background

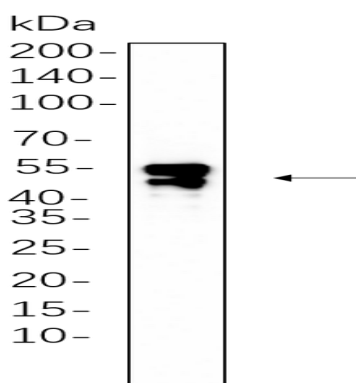
Product Name: JNK1/2/3 Rabbit Monoclonal Antibody
Catalog #: AMRe21196



Cell localization:Nucleus.The protein encoded by this gene is a member of the MAP kinase family. MAP kinases act as an integration point for multiple biochemical signals, and are involved in a wide variety of cellular processes such as proliferation, differentiation, transcription regulation and development. This kinase is activated by various cell stimuli, and targets specific transcription factors, and thus mediates immediate-early gene expression in response to cell stimuli. The activation of this kinase by tumor-necrosis factor alpha (TNF-alpha) is found to be required for TNF-alpha induced apoptosis. This kinase is also involved in UV radiation induced apoptosis, which is thought to be related to cytochrom c-mediated cell death pathway. Studies of the mouse counterpart of this gene suggested that this kinase play a key role in T cell proliferation, apoptosis and differentiation. Several alternatively spl

Research Area

Image Data



Hela whole cell lysates were separated by 10% SDS-PAGE, and the membrane was blotted with primary antibody(1:1000).
The HRP-conjugated Goat anti-Rabbit IgG(H + L) antibody was used to detect the antibody.

Note

For research use only.