
Product Name: ZO1 Rabbit Monoclonal Antibody**Catalog #: AMRe21195**

For research use only.

Summary

Description	Recombinant rabbit monoclonal antibody
Host	Rabbit
Application	WB,IHC,IF,ELISA
Reactivity	Human,Mouse,Rat,Pig
Conjugation	Unconjugated
Modification	Unmodified
Isotype	IgG,Kappa
Clonality	Monoclonal
Form	Liquid
Concentration	0.3mg/ml. The concentration of this product may be batch-dependent.
Storage	Aliquot and store at -20°C (valid for 12 months). Avoid freeze/thaw cycles.
Shipping	Ice bags
Buffer	PBS, 50% glycerol, 0.05% Proclin 300, 0.05%protective protein
Purification	Protein A

Application

Dilution Ratio	IHC 1:1000-1:4000;WB 1:2000-1:10000;IF 1:200-1:1000;ELISA 1:5000-1:20000;
Molecular Weight	Calculated MW:195kD;Observed MW:220kD

Antigen Information

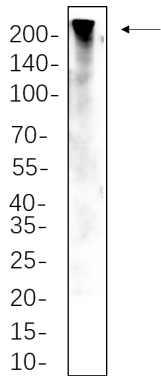
Gene Name	TJP1
Alternative Names	ZO1
Gene ID	7082.0
SwissProt ID	Q07157
Immunogen	Recombinant protein of human ZO-1

Background

Cell localization:Membrane.This gene encodes a protein located on a cytoplasmic membrane surface of intercellular tight junctions. The encoded protein may be involved in signal transduction at cell-cell junctions. Alternative splicing of this gene results in multiple transcript variants. [provided by RefSeq, Jul 2014],

Research Area

Image Data



C2C12 whole cell lysates were separated by 10% SDS-PAGE, and the membrane was blotted with ZO1 Rabbit Monoclonal Antibody(1:1000). The HRP-conjugated Goat anti-Rabbit IgG(H + L) antibody was used to detect the antibody.