

---

**Product Name:**  $\beta$  Catenin (Phospho Thr41/Ser45) Rabbit Monoclonal Antibody  
**Catalog #:** AMRe21193

For research use only.

## Summary

<b>Description</b>	Recombinant rabbit monoclonal antibody
<b>Host</b>	Rabbit
<b>Application</b>	WB,ICC/IF,ELISA,IP
<b>Reactivity</b>	Human,Mouse,Rat
<b>Conjugation</b>	Phospho
<b>Modification</b>	Phosphorylated
<b>Isotype</b>	IgG,Kappa
<b>Clonality</b>	Monoclonal
<b>Form</b>	Liquid
<b>Concentration</b>	0.3mg/ml. The concentration of this product may be batch-dependent.
<b>Storage</b>	Aliquot and store at -20°C (valid for 12 months). Avoid freeze/thaw cycles.
<b>Shipping</b>	Ice bags
<b>Buffer</b>	PBS, 50% glycerol, 0.05% Proclin 300, 0.05%protective protein
<b>Purification</b>	Protein A

## Application

<b>Dilution Ratio</b>	WB 1:2000-1:10000,ICC/IF 1:200-1:1000,ELISA 1:5000-1:20000,IP 1:50-1:200
<b>Molecular Weight</b>	Calculated MW:86kD;Observed MW:92kD

## Antigen Information

<b>Gene Name</b>	CTNNB1
<b>Alternative Names</b>	CTNNB1;CTNNB;OK/SW-cl.35;Catenin beta-1;Beta-catenin
<b>Gene ID</b>	1499.0
<b>SwissProt ID</b>	P35222
<b>Immunogen</b>	A synthetic Phosphorylated peptide corresponding to residues target protein

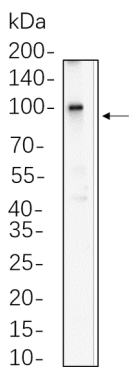
## Background

Cell localization:Membrane, Cytoplasm.The protein encoded by this gene is part of a complex of proteins that constitute adherens junctions (AJs). AJs are necessary for the creation and maintenance of epithelial cell layers by regulating cell growth and adhesion between cells. The encoded protein also anchors the actin cytoskeleton and may be responsible for transmitting

the contact inhibition signal that causes cells to stop dividing once the epithelial sheet is complete. Finally, this protein binds to the product of the APC gene, which is mutated in adenomatous polyposis of the colon. Mutations in this gene are a cause of colorectal cancer (CRC), pilomatixoma (PTR), medulloblastoma (MDB), and ovarian cancer. Alternative splicing results in multiple transcript variants. [provided by RefSeq, Aug 2016],

## Research Area

## Image Data



SW620 whole cell lysates were separated by 10% SDS-PAGE, and the membrane was blotted with  $\beta$  Catenin (Phospho Thr41/Ser45) Rabbit Monoclonal Antibody(1:1000). The HRP-conjugated Goat anti-Rabbit IgG(H + L) antibody was used to detect the antibody.