

**Product Name: Estrogen Receptor  $\alpha$  Rabbit Monoclonal Antibody**  
**Catalog #: AMRe21191**

---

## Summary

<b>Production Name</b>	Estrogen Receptor $\alpha$ Rabbit Monoclonal Antibody
<b>Description</b>	Rabbit Monoclonal Antibody
<b>Host</b>	Rabbit
<b>Application</b>	WB,IHC,IF,IP,ELISA
<b>Reactivity</b>	Human,Mouse,Rat

## Performance

<b>Conjugation</b>	Unconjugated
<b>Modification</b>	Unmodified
<b>Isotype</b>	IgG,Kappa
<b>Clonality</b>	Monoclonal
<b>Form</b>	Liquid
<b>Storage</b>	Store at 4°C short term. Aliquot and store at -20°C long term. Avoid freeze/thaw cycles.
<b>Buffer</b>	PBS, 50% glycerol, 0.05% Proclin 300, 0.05% protective protein
<b>Purification</b>	Protein A

## Immunogen

<b>Gene Name</b>	ESR1
<b>Alternative Names</b>	ESR1 ESR NR3A1
<b>Gene ID</b>	2099.0
<b>SwissProt ID</b>	P03372.

## Application

<b>Dilution Ratio</b>	IHC 1:200-1:1000;WB 1:2000-1:10000;IF 1:200-1:1000;ELISA 1:5000-1:20000;IP 1:50-1:200;
<b>Molecular Weight</b>	Calculated MW:66kD;Observed MW:66kD

## Background

---

**Product Name: Estrogen Receptor  $\alpha$  Rabbit Monoclonal Antibody**  
**Catalog #: AMRe21191**

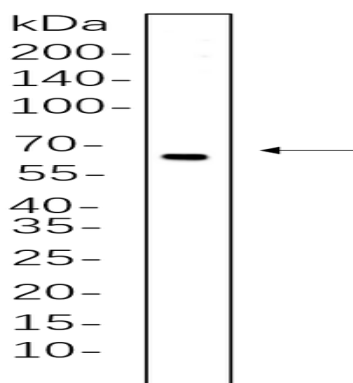
---



Cell localization:Nucleus.estrogen receptor 1(ESR1) Homo sapiens This gene encodes an estrogen receptor, a ligand-activated transcription factor composed of several domains important for hormone binding, DNA binding, and activation of transcription. The protein localizes to the nucleus where it may form a homodimer or a heterodimer with estrogen receptor 2. Estrogen and its receptors are essential for sexual development and reproductive function, but also play a role in other tissues such as bone. Estrogen receptors are also involved in pathological processes including breast cancer, endometrial cancer, and osteoporosis. Alternative promoter usage and alternative splicing result in dozens of transcript variants, but the full-length nature of many of these variants has not been determined. [provided by RefSeq, Mar 2014],

## Research Area

## Image Data



MCF7 whole cell lysates were separated by 10% SDS-PAGE, and the membrane was blotted with primary antibody(1:1000).  
The HRP-conjugated Goat anti-Rabbit IgG(H + L) antibody was used to detect the antibody.

## Note

For research use only.