

Product Name: EZH2 Rabbit Monoclonal Antibody
Catalog #: AMRe21173



Summary

Production Name	EZH2 Rabbit Monoclonal Antibody
Description	Rabbit Monoclonal Antibody
Host	Rabbit
Application	WB,IHC,IF,IP,ELISA
Reactivity	Human,Mouse,Rat

Performance

Conjugation	Unconjugated
Modification	Unmodified
Isotype	IgG,Kappa
Clonality	Monoclonal
Form	Liquid
Storage	Store at 4°C short term. Aliquot and store at -20°C long term. Avoid freeze/thaw cycles.
Buffer	PBS, 50% glycerol, 0.05% Proclin 300, 0.05% protective protein
Purification	Protein A

Immunogen

Gene Name	EZH2
Alternative Names	KMT6
Gene ID	2146.0
SwissProt ID	Q15910.

Application

Dilution Ratio	IHC 1:500-1:1000;WB 1:2000-1:10000;IF 1:200-1:1000;ELISA 1:5000-1:20000;IP 1:50-1:200;
Molecular Weight	Calculated MW:85kD;Observed MW:85kD

Background

Cell localization:Nucleus.enhancer of zeste 2 polycomb repressive complex 2 subunit(EZH2) Homo sapiens This gene

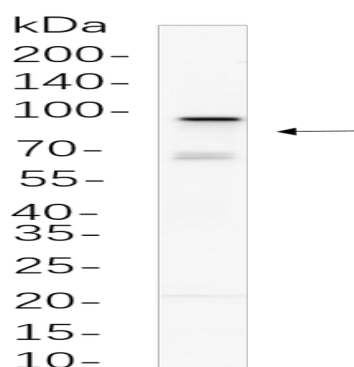
Product Name: EZH2 Rabbit Monoclonal Antibody
Catalog #: AMRe21173



encodes a member of the Polycomb-group (PcG) family. PcG family members form multimeric protein complexes, which are involved in maintaining the transcriptional repressive state of genes over successive cell generations. This protein associates with the embryonic ectoderm development protein, the VAV1 oncoprotein, and the X-linked nuclear protein. This protein may play a role in the hematopoietic and central nervous systems. Multiple alternatively spliced transcript variants encoding distinct isoforms have been identified for this gene. [provided by RefSeq, Feb 2011],

Research Area

Image Data



C6 whole cell lysates were separated by 10% SDS-PAGE, and the membrane was blotted with primary antibody(1:1000). The HRP-conjugated Goat anti-Rabbit IgG(H + L) antibody was used to detect the antibody.

Note

For research use only.