
Product Name: MMP2 Rabbit Monoclonal Antibody**Catalog #: AMRe21168**

For research use only.

Summary

Description	Recombinant rabbit monoclonal antibody
Host	Rabbit
Application	WB,IF,ELISA
Reactivity	Human,Mouse,Rat
Conjugation	Unconjugated
Modification	Unmodified
Isotype	IgG,Kappa
Clonality	Monoclonal
Form	Liquid
Concentration	0.3mg/ml. The concentration of this product may be batch-dependent.
Storage	Aliquot and store at -20°C (valid for 12 months). Avoid freeze/thaw cycles.
Shipping	Ice bags
Buffer	PBS, 50% glycerol, 0.05% Proclin 300, 0.05%protective protein
Purification	Protein A

Application

Dilution Ratio	WB 1:2000-1:10000;IF 1:200-1:1000;ELISA 1:5000-1:20000;
Molecular Weight	Calculated MW:74kD;Observed MW:64kD

Antigen Information

Gene Name	MMP2
Alternative Names	MMP2;CLG4A;72 kDa type IV collagenase;72 kDa gelatinase;Gelatinase A;Matrix metalloproteinase-2;MMP-2;TBE-1
Gene ID	4313.0
SwissProt ID	P08253
Immunogen	A synthetic peptide of human MMP2

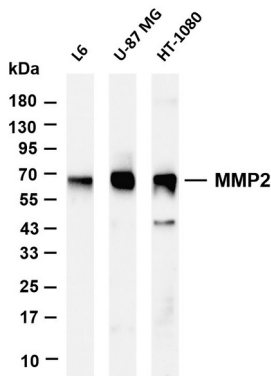
Background

Cell localization:Cytoplasm, Nucleus.matrix metalloproteinase 2(MMP2) Homo sapiens This gene is a member of the matrix metalloproteinase (MMP) gene family, that are zinc-dependent enzymes capable of cleaving components of the extracellular

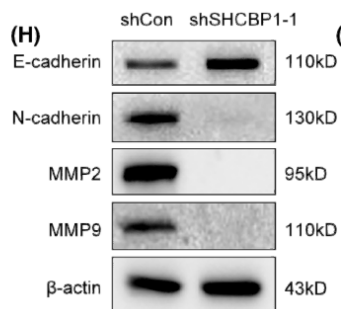
matrix and molecules involved in signal transduction. The protein encoded by this gene is a gelatinase A, type IV collagenase, that contains three fibronectin type II repeats in its catalytic site that allow binding of denatured type IV and V collagen and elastin. Unlike most MMP family members, activation of this protein can occur on the cell membrane. This enzyme can be activated extracellularly by proteases, or, intracellularly by its S-glutathiolation with no requirement for proteolytical removal of the pro-domain. This protein is thought to be involved in multiple pathways including roles in the nervous system, endometrial menstrual breakdown, regulation of vascularization, and metastasis. Mutations in this gene have been associated with Win

Research Area

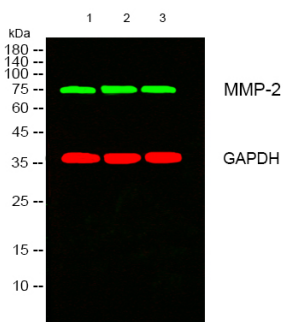
Image Data



Various whole cell lysates were separated by 4-20% SDS-PAGE, and the membrane was blotted with anti-MMP2 antibody. The HRP-conjugated Goat anti-Rabbit IgG(H + L) antibody was used to detect the antibody.



WB Human 1 : 1000 A549 cell



Western blot analysis of lysates from 1) 3T3 , 2) Jurkat ,3) HT29 cells, (Green) MMP2 Rabbit Monoclonal Antibody was diluted at 1:1000, 4° over night, secondary antibody was diluted at 1:10000, 37° 1hour. (Red) GAPDH Monoclonal Antibody antibody was diluted at 1:5000 as loading control, 4° over night,secondary antibody was diluted at 1:10000, 37° 1hour.