

Product Name: Flotillin-1 Rabbit Monoclonal Antibody

Catalog #: AMRe21166

For research use only.

Summary

Description	Recombinant rabbit monoclonal antibody
Host	Rabbit
Application	WB,IHC,ICC/IF,ELISA,IP
Reactivity	Human,Mouse,Rat
Conjugation	Unconjugated
Modification	Unmodified
Isotype	IgG,Kappa
Clonality	Monoclonal
Form	Liquid
Concentration	0.3mg/ml. The concentration of this product may be batch-dependent.
Storage	Aliquot and store at -20°C (valid for 12 months). Avoid freeze/thaw cycles.
Shipping	Ice bags
Buffer	PBS, 50% glycerol, 0.05% Proclin 300, 0.05%protective protein
Purification	Protein A

Application

Dilution Ratio	WB 1:2000-1:10000,IHC 1:500-1:2000,ICC/IF 1:200-1:1000,ELISA 1:5000-1:20000,IP 1:50-1:200
Molecular Weight	Calculated MW:47kD;Observed MW:47kD

Antigen Information

Gene Name	FLOT1
Alternative Names	Flotillin-1
Gene ID	10211.0
SwissProt ID	O75955
Immunogen	A synthetic peptide of human Flotillin 1

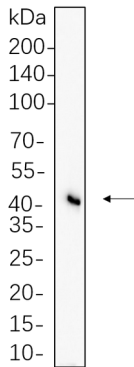
Background

Cell localization:Membrane.This gene encodes an protein that localizes to the caveolae, which are small domains on the inner cell membranes. This protein plays a role in vesicle trafficking and cell morphology. Alternative splicing results in multiple

transcript variants. [provided by RefSeq, Jan 2016],

Research Area

Image Data



Hela cell lysates were separated by 4-20% SDS-PAGE, and the membrane was blotted with Flotillin-1 Rabbit Monoclonal Antibody 1:1000. The HRP-conjugated Goat anti-Rabbit IgG(H + L) antibody was used to detect the antibody.