
Product Name: IFT88 Rabbit Monoclonal Antibody**Catalog #: AMRe21161**

For research use only.

Summary

Description	Recombinant rabbit monoclonal antibody
Host	Rabbit
Application	WB,ICC/IF,ELISA,IP
Reactivity	Human,Mouse,Rat
Conjugation	Unconjugated
Modification	Unmodified
Isotype	IgG,Kappa
Clonality	Monoclonal
Form	Liquid
Concentration	0.3mg/ml. The concentration of this product may be batch-dependent.
Storage	Aliquot and store at -20°C (valid for 12 months). Avoid freeze/thaw cycles.
Shipping	Ice bags
Buffer	PBS, 50% glycerol, 0.05% Proclin 300, 0.05%protective protein
Purification	Protein A

Application

Dilution Ratio	WB 1:2000-1:10000,ICC/IF 1:200-1:1000,ELISA 1:5000-1:20000,IP 1:50-1:200
Molecular Weight	Calculated MW:94kD;Observed MW:94kD

Antigen Information

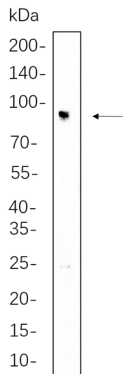
Gene Name	IFT88
Alternative Names	TG737 TTC10
Gene ID	8100.0
SwissProt ID	Q13099
Immunogen	A synthetic peptide of human IFT88

Background

Cell localization:Cytoplasm.This gene encodes a member of the tetratricopeptide repeat (TPR) family. The encoded protein is involved in cilium biogenesis. Mutations of a similar gene in mouse can cause polycystic kidney disease. Several transcript variants encoding distinct isoforms have been identified for this gene. [provided by RefSeq, Jul 2017]

Research Area

Image Data



Mouse kidney cell lysates were separated by 4-20% SDS-PAGE, and the membrane was blotted with IFT88 Rabbit Monoclonal Antibody 1:1000. The HRP-conjugated Goat anti-Rabbit IgG(H + L) antibody was used to detect the antibody.