

**Product Name: p90RSK Rabbit Monoclonal Antibody****Catalog #: AMRe21156**

For research use only.

**Summary**

<b>Description</b>	Recombinant rabbit monoclonal antibody
<b>Host</b>	Rabbit
<b>Application</b>	WB,IHC,ICC/IF,ELISA,IP
<b>Reactivity</b>	Human,Mouse,Rat
<b>Conjugation</b>	Unconjugated
<b>Modification</b>	Unmodified
<b>Isotype</b>	IgG,Kappa
<b>Clonality</b>	Monoclonal
<b>Form</b>	Liquid
<b>Concentration</b>	0.3mg/ml. The concentration of this product may be batch-dependent.
<b>Storage</b>	Aliquot and store at -20°C (valid for 12 months). Avoid freeze/thaw cycles.
<b>Shipping</b>	Ice bags
<b>Buffer</b>	PBS, 50% glycerol, 0.05% Proclin 300, 0.05%protective protein
<b>Purification</b>	Protein A

**Application**

<b>Dilution Ratio</b>	WB 1:2000-1:10000,IHC 1:1000-1:4000,ICC/IF 1:200-1:1000,ELISA 1:5000-1:20000,IP 1:50-1:200
<b>Molecular Weight</b>	Calculated MW:83kD;Observed MW:83kD

**Antigen Information**

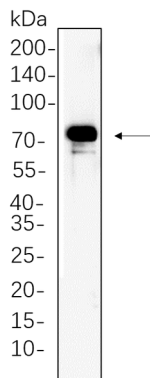
<b>Gene Name</b>	RPS6KA1 RPS6KA1;MAPKAPK1A;RSK1;Ribosomal protein S6 kinase alpha-1;S6K-alpha-1;90 kDa
<b>Alternative Names</b>	ribosomal protein S6 kinase 1;p90-RSK 1;p90RSK1;p90S6K;MAP kinase-activated protein kinase 1a;MAPK-activated protein kinase 1a;MAPKAP kinase 1a;MAPKAP
<b>Gene ID</b>	6195
<b>SwissProt ID</b>	Q15418
<b>Immunogen</b>	A synthetic peptide corresponding to target protein

**Background**

Cell localization: Cytoplasm, Nucleus. Ribosomal protein S6 kinase A1 (RPS6KA1) Homo sapiens This gene encodes a member of the RSK (ribosomal S6 kinase) family of serine/threonine kinases. This kinase contains 2 nonidentical kinase catalytic domains and phosphorylates various substrates, including members of the mitogen-activated kinase (MAPK) signalling pathway. The activity of this protein has been implicated in controlling cell growth and differentiation. Alternate transcriptional splice variants, encoding different isoforms, have been characterized. [provided by RefSeq, Jul 2008],

## Research Area

## Image Data



Rat womb whole cell lysates were separated by 10% SDS-PAGE, and the membrane was blotted with p90RSK Rabbit Monoclonal Antibody(1:1000). The HRP-conjugated Goat anti-Rabbit IgG(H + L) antibody was used to detect the antibody.