

## Product Name: LEF1 Rabbit Monoclonal Antibody

### Catalog #: AMRe21153

For research use only.

## Summary

<b>Description</b>	Recombinant rabbit monoclonal antibody
<b>Host</b>	Rabbit
<b>Application</b>	WB,IHC,ICC/IF,ELISA,IP
<b>Reactivity</b>	Human,Mouse,Rat
<b>Conjugation</b>	Unconjugated
<b>Modification</b>	Unmodified
<b>Isotype</b>	IgG,Kappa
<b>Clonality</b>	Monoclonal
<b>Form</b>	Liquid
<b>Concentration</b>	0.3mg/ml. The concentration of this product may be batch-dependent.
<b>Storage</b>	Aliquot and store at -20°C (valid for 12 months). Avoid freeze/thaw cycles.
<b>Shipping</b>	Ice bags
<b>Buffer</b>	PBS, 50% glycerol, 0.05% Proclin 300, 0.05%protective protein
<b>Purification</b>	Protein A

## Application

<b>Dilution Ratio</b>	WB 1:2000-1:10000,IHC 1:1000-1:4000,ICC/IF 1:200-1:1000,ELISA 1:5000-1:20000,IP 1:50-1:200
<b>Molecular Weight</b>	Calculated MW:44kD;Observed MW:45-60kD

## Antigen Information

<b>Gene Name</b>	LEF1
<b>Alternative Names</b>	LEF1;Lymphoid enhancer-binding factor 1;LEF-1;T cell-specific transcription factor 1-alpha;TCF1-alpha
<b>Gene ID</b>	51176.0
<b>SwissProt ID</b>	Q9UJU2
<b>Immunogen</b>	A synthetic peptide of human LEF1

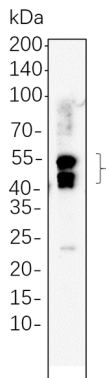
## Background

Cell localization:Nucleus.This gene encodes a transcription factor belonging to a family of proteins that share homology with

the high mobility group protein-1. The protein encoded by this gene can bind to a functionally important site in the T-cell receptor-alpha enhancer, thereby conferring maximal enhancer activity. This transcription factor is involved in the Wnt signaling pathway, and it may function in hair cell differentiation and follicle morphogenesis. Mutations in this gene have been found in somatic sebaceous tumors. This gene has also been linked to other cancers, including androgen-independent prostate cancer. Alternative splicing results in multiple transcript variants. [provided by RefSeq, Oct 2009],

## Research Area

## Image Data



Jurkat whole cell lysates were separated by 10% SDS-PAGE, and the membrane was blotted with LEF1 Rabbit Monoclonal Antibody(1:1000). The HRP-conjugated Goat anti-Rabbit IgG(H + L) antibody was used to detect the antibody.