

Product Name: TCF7 Rabbit Monoclonal Antibody**Catalog #: AMRe21151**

For research use only.

Summary

Description	Recombinant rabbit monoclonal antibody
Host	Rabbit
Application	WB,IHC,ICC/IF,ELISA,IP
Reactivity	Human,Rat
Conjugation	Unconjugated
Modification	Unmodified
Isotype	IgG,Kappa
Clonality	Monoclonal
Form	Liquid
Concentration	0.3mg/ml. The concentration of this product may be batch-dependent.
Storage	Aliquot and store at -20°C (valid for 12 months). Avoid freeze/thaw cycles.
Shipping	Ice bags
Buffer	PBS, 50% glycerol, 0.05% Proclin 300, 0.05%protective protein
Purification	Protein A

Application

Dilution Ratio	WB 1:2000-1:10000,IHC 1:1000-1:4000,ICC/IF 1:200-1:1000,ELISA 1:5000-1:20000,IP 1:50-1:200
Molecular Weight	Calculated MW:42kD;Observed MW:60kD

Antigen Information

Gene Name	TCF7
Alternative Names	TCF7;TCF1;Transcription factor 7;TCF-7;T-cell-specific transcription factor 1;T-cell factor 1;TCF-1
Gene ID	6932.0
SwissProt ID	P36402
Immunogen	A synthetic peptide of human TCF7

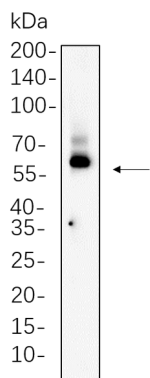
Background

Cell localization:Nucleus.alternative products:2 series of isoforms, L and S, are produced by use of alternative promoter usage.

Additional isoforms seem to exist, function: Transcriptional activator involved in T-cell lymphocyte differentiation. Necessary for the survival of CD4(+) CD8(+) immature thymocytes. Isoforms lacking the N-terminal CTNNB1 binding domain cannot fulfill this role. Binds to the T-lymphocyte-specific enhancer element (5'-WWCAAAG-3') found in the promoter of the CD3E gene. May also act as feedback transcriptional repressor of CTNNB1 and TCF7L2 target genes. TLE1, TLE2, TLE3 and TLE4 repress transactivation mediated by TCF7 and CTNNB1., induction: By TCF7L2 and CTNNB1., sequence caution: Wrong choice of frame., similarity: Belongs to the TCF/LEF family., similarity: Contains 1 HMG box DNA-binding domain., subunit: Binds the armadillo repeat of CTNNB1 and forms a stable complex. Interacts with AES, TLE1, TLE2, TLE3 and TLE4., tissue specificity: Predominantly in T-cells. Also detected in proliferating intestinal epithelial cells and in the basal epithelial cells of mammary gland epithelium.,

Research Area

Image Data



HT-29 whole cell lysates were separated by 10% SDS-PAGE, and the membrane was blotted with TCF7 Rabbit Monoclonal Antibody(1:1000). The HRP-conjugated Goat anti-Rabbit IgG(H + L) antibody was used to detect the antibody.