

Product Name: Paxillin (Phospho Tyr118) Rabbit Monoclonal Antibody**Catalog #: AMRe21147**

For research use only.

Summary

Description	Recombinant rabbit monoclonal antibody
Host	Rabbit
Application	WB,ICC/IF,ELISA,IP
Reactivity	Human,Mouse,Rat
Conjugation	Phospho
Modification	Phosphorylated
Isotype	IgG,Kappa
Clonality	Monoclonal
Form	Liquid
Concentration	0.2mg/ml. The concentration of this product may be batch-dependent.
Storage	Aliquot and store at -20°C (valid for 12 months). Avoid freeze/thaw cycles.
Shipping	Ice bags
Buffer	PBS, 50% glycerol, 0.05% Proclin 300, 0.05%protective protein
Purification	Protein A

Application

Dilution Ratio	WB 1:2000-1:10000,ICC/IF 1:200-1:1000,ELISA 1:5000-1:20000,IP 1:50-1:200
Molecular Weight	Calculated MW:65kD;Observed MW:65kD

Antigen Information

Gene Name	PXN
Alternative Names	PXN;Paxillin
Gene ID	5829.0
SwissProt ID	P49023
Immunogen	A synthetic Phosphorylated peptide corresponding to residues target protein

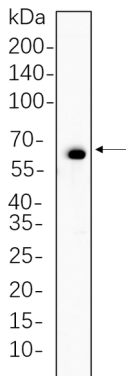
Background

Cell localization:Cytoplasm, Nucleus.This gene encodes a cytoskeletal protein involved in actin-membrane attachment at sites of cell adhesion to the extracellular matrix (focal adhesion). Alternatively spliced transcript variants encoding different isoforms have been described for this gene. These isoforms exhibit different expression pattern, and have different biochemical, as well

as physiological properties (PMID:9054445). [provided by RefSeq, Aug 2011],

Research Area

Image Data



Hela cell lysates were separated by 4-20% SDS-PAGE, and the membrane was blotted with Paxillin (Phospho Tyr118) Rabbit Monoclonal Antibody 1:1000. The HRP-conjugated Goat anti-Rabbit IgG(H + L) antibody was used to detect the antibody.