

**Product Name: STAT5 (Phospho Tyr694) Rabbit  
Monoclonal Antibody  
Catalog #: AMRe21146**

---

## Summary

<b>Production Name</b>	STAT5 (Phospho Tyr694) Rabbit Monoclonal Antibody
<b>Description</b>	Rabbit Monoclonal Antibody
<b>Host</b>	Rabbit
<b>Application</b>	WB,IHC,IF,IP,ELISA
<b>Reactivity</b>	Human,Mouse,Rat

## Performance

<b>Conjugation</b>	Phospho
<b>Modification</b>	Phosphorylated
<b>Isotype</b>	IgG,Kappa
<b>Clonality</b>	Monoclonal
<b>Form</b>	Liquid
<b>Storage</b>	Store at 4°C short term. Aliquot and store at -20°C long term. Avoid freeze/thaw cycles.
<b>Buffer</b>	PBS, 50% glycerol, 0.05% Proclin 300, 0.05%protective protein
<b>Purification</b>	Protein A

## Immunogen

<b>Gene Name</b>	STAT5A/STAT5B
<b>Alternative Names</b>	STAT5A;STAT5;Signal transducer and activator of transcription 5A;STAT5B;Signal transducer and activator of transcription 5B
<b>Gene ID</b>	6776;6777
<b>SwissProt ID</b>	P42229;P51692.

## Application

<b>Dilution Ratio</b>	IHC 1:100-1:500;WB 1:2000-1:10000;IF 1:200-1:1000;ELISA 1:5000-1:20000;IP 1:50-1:200;
<b>Molecular Weight</b>	Calculated MW:91kD;Observed MW:105kD

**Product Name: STAT5 (Phospho Tyr694) Rabbit  
Monoclonal Antibody  
Catalog #: AMRe21146**

---

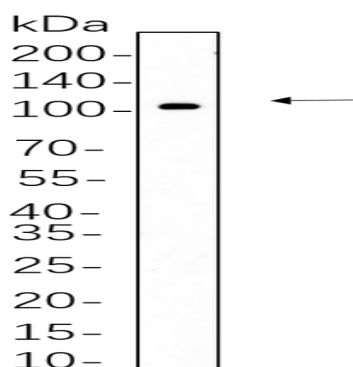


## Background

Cell localization: Cytoplasm, Nucleus. The protein encoded by this gene is a member of the STAT family of transcription factors. In response to cytokines and growth factors, STAT family members are phosphorylated by the receptor associated kinases, and then form homo- or heterodimers that translocate to the cell nucleus where they act as transcription activators. This protein is activated by, and mediates the responses of many cell ligands, such as IL2, IL3, IL7 GM-CSF, erythropoietin, thrombopoietin, and different growth hormones. Activation of this protein in myeloma and lymphoma associated with a TEL/JAK2 gene fusion is independent of cell stimulus and has been shown to be essential for tumorigenesis. The mouse counterpart of this gene is found to induce the expression of BCL2L1/BCL-X(L), which suggests the antiapoptotic function of this gene in cells. Alternatively spliced transcript variants have been

## Research Area

## Image Data



Hela whole cell lysates were separated by 10% SDS-PAGE, and the membrane was blotted with primary antibody(1:1000).  
The HRP-conjugated Goat anti-Rabbit IgG(H + L) antibody was used to detect the antibody.

## Note

For research use only.