
Product Name: cGAS Rabbit Monoclonal Antibody**Catalog #: AMRe21138**

For research use only.

Summary

Description	Recombinant rabbit monoclonal antibody
Host	Rabbit
Application	WB,IHC,ICC/IF,ELISA,IP
Reactivity	Mouse
Conjugation	Unconjugated
Modification	Unmodified
Isotype	IgG,Kappa
Clonality	Monoclonal
Form	Liquid
Concentration	0.2mg/ml. The concentration of this product may be batch-dependent.
Storage	Aliquot and store at -20°C (valid for 12 months). Avoid freeze/thaw cycles.
Shipping	Ice bags
Buffer	PBS, 50% glycerol, 0.05% Proclin 300, 0.05%protective protein
Purification	Protein A

Application

Dilution Ratio	WB 1:2000-1:10000,IHC 1:200-1:1000,ICC/IF 1:200-1:1000,ELISA 1:5000-1:20000,IP 1:50-1:200
Molecular Weight	Calculated MW:58kD;Observed MW:58kD

Antigen Information

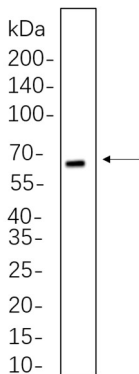
Gene Name	MB21D1
Alternative Names	cGAS C6orf150
Gene ID	101559.0
SwissProt ID	Q8C6L5
Immunogen	

Background

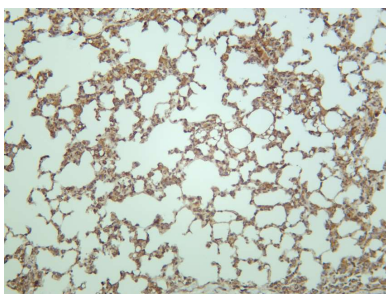
Cell localization: Cytoplasm, Nucleus. Enables several functions, including 2',3'-cyclic GMP-AMP synthase activity; molecular condensate scaffold activity; and phosphatidylinositol-4,5-bisphosphate binding activity. Involved in several processes, including defense response to symbiont; intracellular signal transduction; and regulation of defense response. Located in nuclear body; plasma membrane; and site of double-strand break. Is active in cytosol and nucleus. [provided by Alliance of Genome Resources, Feb 2025]

Research Area

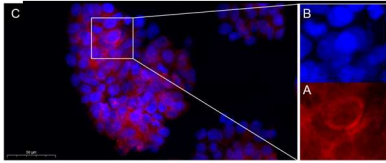
Image Data



RAW264.7 whole cell lysates were separated by 10% SDS-PAGE, and the membrane was blotted with cGAS Rabbit Monoclonal Antibody(1:1000). The HRP-conjugated Goat anti-Rabbit IgG(H + L) antibody was used to detect the antibody.



Mouse lung was stained with cGAS Rabbit Monoclonal Antibody



Immunofluorescence analysis of HT-29 . Picture A: cGAS Rabbit Monoclonal Antibody (red). Picture B: DAPI (blue). Picture C: Merge of A+B