

Product Name: Endoplasmic Reticulum Rabbit Monoclonal Antibody**Catalog #: AMRe21137**

For research use only.

Summary

Description	Recombinant rabbit monoclonal antibody
Host	Rabbit
Application	WB,IHC,ICC/IF,ELISA,IP
Reactivity	Human,Mouse,Rat
Conjugation	Unconjugated
Modification	Unmodified
Isotype	IgG,Kappa
Clonality	Monoclonal
Form	Liquid
Concentration	0.2mg/ml. The concentration of this product may be batch-dependent.
Storage	Aliquot and store at -20°C (valid for 12 months). Avoid freeze/thaw cycles.
Shipping	Ice bags
Buffer	PBS, 50% glycerol, 0.05% Proclin 300, 0.05%protective protein
Purification	Protein A

Application

Dilution Ratio	WB 1:2000-1:10000,IHC 1:1000-1:5000,ICC/IF 1:200-1:1000,ELISA 1:5000-1:20000,IP 1:50-1:200
Molecular Weight	Calculated MW:93kD;Observed MW:100kD

Antigen Information

Gene Name	HSP90B1
Alternative Names	HSP90B1;GRP94;TRA1;Endoplasmic;94 kDa glucose-regulated protein;GRP-94;Heat shock protein 90 kDa beta member 1;Tumor rejection antigen 1;gp96 homolog
Gene ID	7184.0
SwissProt ID	P14625
Immunogen	A synthetic peptide of human GRP94

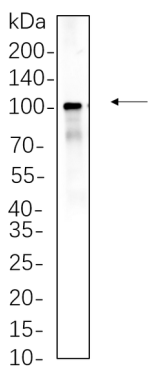
Background

Cell localization:Endoplasmic reticulum.This gene encodes a member of a family of adenosine triphosphate(ATP)-metabolizing

molecular chaperones with roles in stabilizing and folding other proteins. The encoded protein is localized to melanosomes and the endoplasmic reticulum. Expression of this protein is associated with a variety of pathogenic states, including tumor formation. There is a microRNA gene located within the 5' exon of this gene. There are pseudogenes for this gene on chromosomes 1 and 15. [provided by RefSeq, Aug 2012],

Research Area

Image Data



Hela whole cell lysates were separated by 10% SDS-PAGE, and the membrane was blotted with Endoplasmic Rabbit Monoclonal Antibody(1:1000). The HRP-conjugated Goat anti-Rabbit IgG(H + L) antibody was used to detect the antibody.