
Product Name: BMAL1 Rabbit Monoclonal Antibody**Catalog #: AMRe21134**

For research use only.

Summary

Description	Recombinant rabbit monoclonal antibody
Host	Rabbit
Application	WB,IHC,ICC/IF,ELISA,IP
Reactivity	Human,Mouse,Rat
Conjugation	Unconjugated
Modification	Unmodified
Isotype	IgG,Kappa
Clonality	Monoclonal
Form	Liquid
Concentration	0.2mg/ml. The concentration of this product may be batch-dependent.
Storage	Aliquot and store at -20°C (valid for 12 months). Avoid freeze/thaw cycles.
Shipping	Ice bags
Buffer	PBS, 50% glycerol, 0.05% Proclin 300, 0.05%protective protein
Purification	Protein A

Application

Dilution Ratio	WB 1:2000-1:10000,IHC 1:200-1:1000,ICC/IF 1:200-1:1000,ELISA 1:5000-1:20000,IP 1:50-1:200
Molecular Weight	Calculated MW:69kD;Observed MW:78kD

Antigen Information

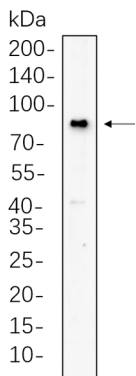
Gene Name	ARNTL
Alternative Names	ARNTL;BHLHE5;BMAL1;MOP3;PASD3;Aryl hydrocarbon receptor nuclear translocator-like protein 1;Basic-helix-loop-helix-PAS protein MOP3;Brain and muscle ARNT-like 1Class E basic helix-loop-helix protein 5;bHLHe5;Member of PAS protein 3;PAS domain-containing protein 3;bHLH-PAS protein JAP3
Gene ID	406.0
SwissProt ID	O00327
Immunogen	

Background

Cell localization:Nucleus.The protein encoded by this gene is a basic helix-loop-helix protein that forms a heterodimer with CLOCK. This heterodimer binds E-box enhancer elements upstream of Period (PER1, PER2, PER3) and Cryptochrome (CRY1, CRY2) genes and activates transcription of these genes. PER and CRY proteins heterodimerize and repress their own transcription by interacting in a feedback loop with CLOCK/ARNTL complexes. Defects in this gene have been linked to infertility, problems with gluconeogenesis and lipogenesis, and altered sleep patterns. Several transcript variants encoding different isoforms have been found for this gene. [provided by RefSeq, Jul 2014],

Research Area

Image Data



Rat brain cell lysates were separated by 4-20% SDS-PAGE, and the membrane was blotted with BMAL1 Rabbit Monoclonal Antibody 1:1000. The HRP-conjugated Goat anti-Rabbit IgG(H + L) antibody was used to detect the antibody.