

**Product Name: Insulin Receptor  $\beta$  Rabbit Monoclonal Antibody**  
**Catalog #: AMRe21129**

---

## Summary

<b>Production Name</b>	Insulin Receptor $\beta$ Rabbit Monoclonal Antibody
<b>Description</b>	Rabbit Monoclonal Antibody
<b>Host</b>	Rabbit
<b>Application</b>	WB,IHC,IF,IP,ELISA
<b>Reactivity</b>	Human,Mouse,Rat

## Performance

<b>Conjugation</b>	Unconjugated
<b>Modification</b>	Unmodified
<b>Isotype</b>	IgG,Kappa
<b>Clonality</b>	Monoclonal
<b>Form</b>	Liquid
<b>Storage</b>	Store at 4°C short term. Aliquot and store at -20°C long term. Avoid freeze/thaw cycles.
<b>Buffer</b>	PBS, 50% glycerol, 0.05% Proclin 300, 0.05% protective protein
<b>Purification</b>	Protein A

## Immunogen

<b>Gene Name</b>	INSR
<b>Alternative Names</b>	Insulin receptor;IR;CD antigen CD220;[Cleaved into: Insulin receptor subunit alpha;Insulin receptor subunit beta]
<b>Gene ID</b>	3643.0
<b>SwissProt ID</b>	P06213.

## Application

<b>Dilution Ratio</b>	IHC 1:200-1:1000;WB 1:2000-1:10000;IF 1:200-1:1000;ELISA 1:5000-1:20000;IP 1:50-1:200;
<b>Molecular Weight</b>	Calculated MW:95kD;Observed MW:95kD

**Product Name: Insulin Receptor  $\beta$  Rabbit Monoclonal Antibody**  
**Catalog #: AMRe21129**

---

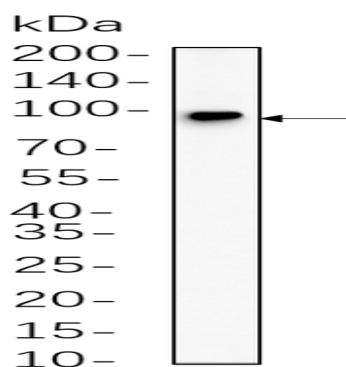


## Background

Cell localization:Membrane.This gene encodes a member of the receptor tyrosine kinase family of proteins. The encoded preproprotein is proteolytically processed to generate alpha and beta subunits that form a heterotetrameric receptor. Binding of insulin or other ligands to this receptor activates the insulin signaling pathway, which regulates glucose uptake and release, as well as the synthesis and storage of carbohydrates, lipids and protein. Mutations in this gene underlie the inherited severe insulin resistance syndromes including type A insulin resistance syndrome, Donohue syndrome and Rabson-Mendenhall syndrome. Alternative splicing results in multiple transcript variants. [provided by RefSeq, Oct 2015],

## Research Area

## Image Data



Rat womb cell lysates were separated by 4-20% SDS-PAGE, and the membrane was blotted with primary antibody 1:1000.  
The HRP-conjugated Goat anti-Rabbit IgG(H + L) antibody was used to detect the antibody.

## Note

For research use only.