

**Product Name: PLK1 Rabbit Monoclonal Antibody****Catalog #: AMRe21126**

For research use only.

**Summary**

<b>Description</b>	Recombinant rabbit monoclonal antibody
<b>Host</b>	Rabbit
<b>Application</b>	WB,IHC,ICC/IF,ELISA,IP
<b>Reactivity</b>	Human,Mouse,Rat
<b>Conjugation</b>	Unconjugated
<b>Modification</b>	Unmodified
<b>Isotype</b>	IgG,Kappa
<b>Clonality</b>	Monoclonal
<b>Form</b>	Liquid
<b>Concentration</b>	0.3mg/ml. The concentration of this product may be batch-dependent.
<b>Storage</b>	Aliquot and store at -20°C (valid for 12 months). Avoid freeze/thaw cycles.
<b>Shipping</b>	Ice bags
<b>Buffer</b>	PBS, 50% glycerol, 0.05% Proclin 300, 0.05%protective protein
<b>Purification</b>	Protein A

**Application**

<b>Dilution Ratio</b>	WB 1:2000-1:10000,IHC 1:200-1:1000,ICC/IF 1:200-1:1000,ELISA 1:5000-1:20000,IP 1:50-1:200
<b>Molecular Weight</b>	Calculated MW:68kD;Observed MW:68kD

**Antigen Information**

<b>Gene Name</b>	PLK1
<b>Alternative Names</b>	Serine/threonine-protein kinase PLK1;Polo-like kinase 1;PLK-1;Serine/threonine-protein kinase 13;STPK13;
<b>Gene ID</b>	5347.0
<b>SwissProt ID</b>	P53350
<b>Immunogen</b>	A synthetic peptide corresponding to target protein

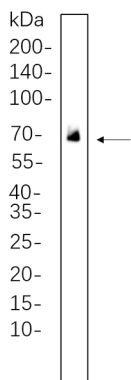
**Background**

Cell localization:Nucleus.The Ser/Thr protein kinase encoded by this gene belongs to the CDC5/Polo subfamily. It is highly

expressed during mitosis and elevated levels are found in many different types of cancer. Depletion of this protein in cancer cells dramatically inhibited cell proliferation and induced apoptosis; hence, it is a target for cancer therapy. [provided by RefSeq, Sep 2015],

## Research Area

## Image Data



U-14 whole cell lysates were separated by 10% SDS-PAGE, and the membrane was blotted with PLK1 Rabbit Monoclonal Antibody(1:1000). The HRP-conjugated Goat anti-Rabbit IgG(H + L) antibody was used to detect the antibody.